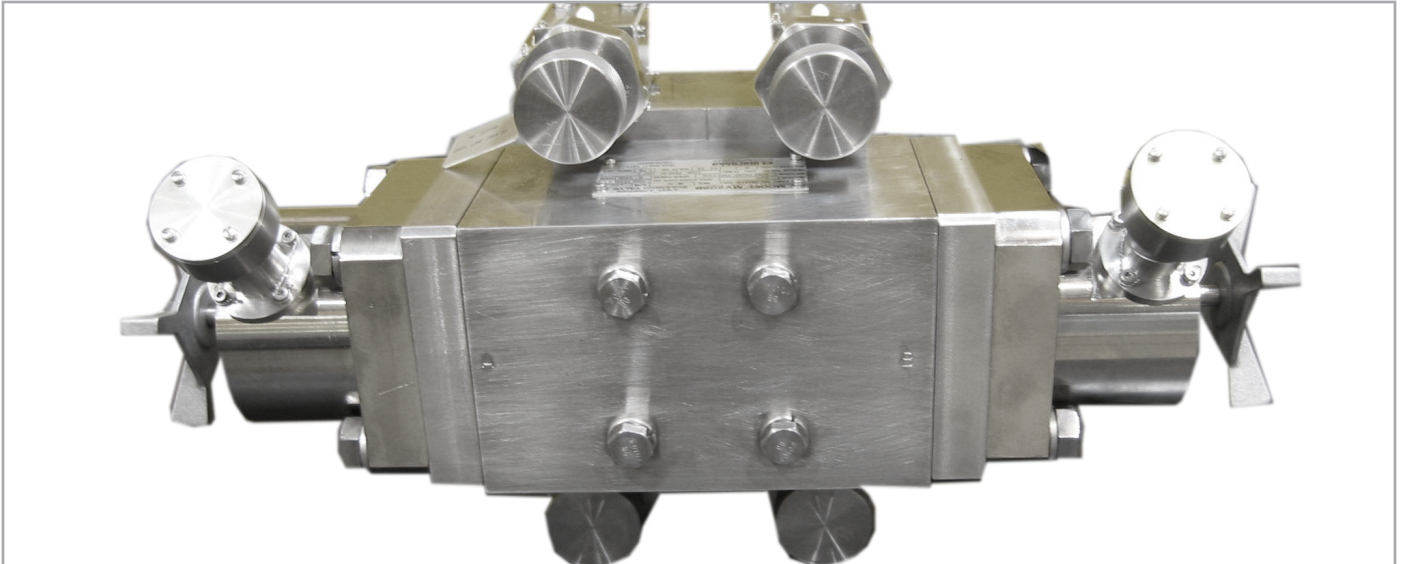


Nuclear Power Products and Services

**About our Teaming Partner**

Marotta has been supplying engineered solenoid and check valves to the nuclear power industry for over 40 years. These solenoid valves have been widely used in fuel transfer application for the CANDU reactor design, while Marotta excess flow check valves have been used in multiple applications across the worldwide nuclear industry.

Marotta

Excess Flow Check Valves and Solenoid Operated Valves

In the Mid-1990s Marotta retired their ASME N and NPT stamps and to ensure that the nuclear industry would continue to receive support for Marotta products, Enertech and Marotta formed an exclusive partnership. Through this partnership, Enertech has been approved to manufacture Marotta Safety-Related and ASME Code Section III valves under its Appendix B program and ASME N and NPT Stamps.

Fuel Transfer Valves

- Marotta has over 40 years of reliable performance in CANDU plants worldwide
- MV 208, MV208B, MV208B-1 designs supported 4 Way 2 Position Solenoid Valve
- Manual override
 - Remains in last energized position
- Latching design
 - Valve utilizes dished disc springs on both sides of the
 - Valve to ensure valve remains in last position
- Dual seating
 - Seats against body and seat assembly simultaneously
 - Two piece poppet

Cycle Tested Proven Design

Model MV208

- Production manifold assemblies cycled tested for 100,000 cycles
- Tested for external leakage past bellows seals, no leakage allowed

Bellows Assemblies Helium

Leak Test After Cycle Test

- Additional 100 strokes the design stroking distance
- 103 kPa (15 psig) with 50% minimum helium
- No leakage past the bellows and the weld joints to the bellows allowed

Excess Flow Check Valves

- Stops flow instantly if line bursts or fails
- Remains shut until differential pressure across valve is reduced
- 1/4" - 4"
- Simplified construction
- Pipe, straight thread, socket weld end connections
- Operating pressure: 50 - 6,000 psi
- Water, oil, air, and acid applications

Typical Applications for Marotta Nuclear Products

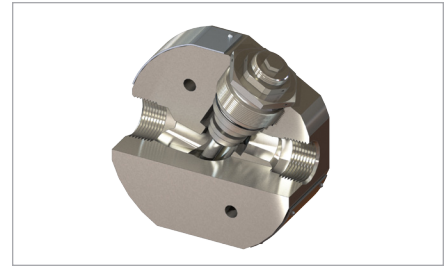
- Instrument Air
- CANDU Fuel Handling Machines
- Manifold Assemblies
- Residual Heat Removal
- Suppression Pool Pressure
- Nitrogen Systems
- RCP Seals

Obsolescence

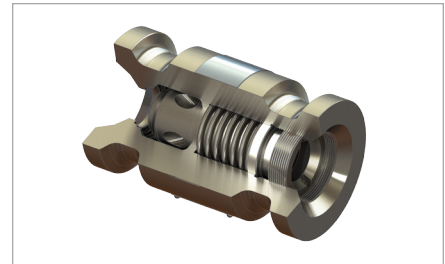
Enertech supports all Marotta Nuclear Products through special manufacturing runs and under an exclusive license from Marotta. Marotta Nuclear Products range from Pressure Regulators, Pressure Relief Valves, 2-Way, 2 Directional Control Valves, and Pilot Operated, 2-Way, 2 Position Shutoff Valves.

Enertech Quality Assurance

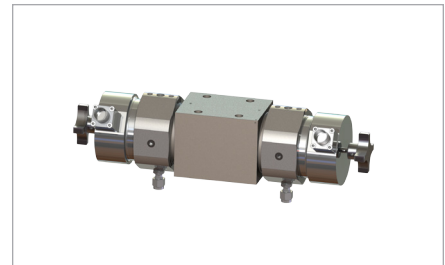
- ASME Section III NCA3800 & 4000
- ASME Section XI – IWA 4400
- ASME NQA-1 (1994 & 2008-09(a))
- National Board – NBIC-23 (2011) NR Stamp
- ANS 56.2 Appendix J
- N45.2 - 1977
- 10CFR50 Appendix B
- 10CFR Part 21



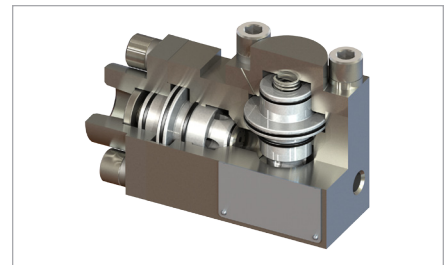
Check Valve



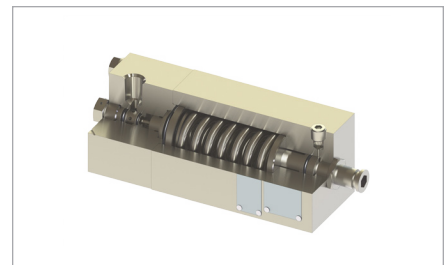
Excess Flow Check Valve



Solenoid Valve (4-way 2-position)



Double Isolation Pilot Operated Check Valve



Pressure Reducing Valve

CONTACT INFORMATION:

2950 Birch Street, Brea, CA 92821
enertech@curtisswright.com | +1.714.528.2301