

Pipe Crawler Inspection Robot

Robots for the Nuclear Industry

**CURTISS -
WRIGHT**

Nuclear Power Products and Services



About our Teaming Partner

Curtiss-Wright has partnered with Deep Trekker to provide high-quality, robust, and portable Remotely Operated Vehicles (ROVs) to customers that require specialized platforms for remote data collection, inspections, access to hazardous areas or precision manipulations.

When equipped with high resolution cameras and lights, ROVs can easily maneuver around confined spaces and in radiation areas without the stay time constraints that apply to human workers. Critical structures can be examined safely during inspection, and, with manipulator add-ons, maintenance tasks can be performed with efficiency.

Deep Trekker has direct experience in the energy market, including hydroelectric, offshore wind, and nuclear, and has been successfully deployed in defense applications.



Our rugged and fully submersible, battery-operated pipe crawler inspection robots offer efficiency, cost savings, and enhanced safety. Each remote pipe crawler is equipped with closed circuit television (CCTV) cameras, sonar, and LIDAR feeds. They also have options for additional task-specific add-ons. They are capable of inspecting pipes from 6" to 36" in diameter, allowing human operators to safely inspect difficult to reach pipes and equipment.

Time-Efficient Deployments

Pipe crawlers are portable and versatile, ideal for quick deployment into the toughest environments. The robot's hybrid design can run on generator power or battery, with a single charge lasting up to 8 hours.

Cost Savings

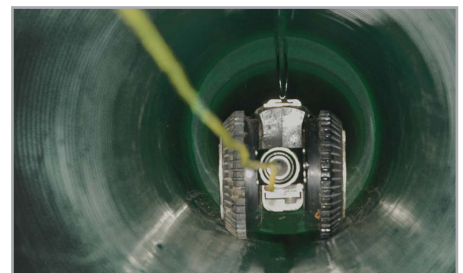
Equipped with high-resolution cameras and live video, crawlers allow operators to perform inspections and record data through a waterproof controller. This instant feedback enables operators to pinpoint issues, make informed decisions, and reduce maintenance costs.

Enhanced Safety

Pipe crawlers can easily access tight spaces, greatly reducing potential injury and harm to human inspectors.

Features

- Fully submersible
- Centers in 6" to 36" pipes
- 164' (50m) depth rating
- 656' (200m) tether length
- Battery life up to 8 hours
- 1080 full HD pan/tilt camera
- Robotic elevating arm
- Assorted wheel options
- Flood lights and laser scaler



CONTACT INFORMATION:

44 Shelter Rock Road, Danbury, CT 06810 USA
outage&fuel@curtisswright.com | +1.203.448.3310

Nuclear
CWNUCLEAR.COM

LC - 5025 - 10.2024 - OFMS