



Instrumentation & Controls

NUS Instruments Replacement Products

Reengineering and Reverse Engineering

OEM Repair and Refurbishment

Power Supply Maintenance and Repair

Instrumentation & Controls

Curtiss-Wright is a leading supplier of replacements for obsolete instrumentation and controls in nuclear power plants.

We specialize in repairing, replacing, and reengineering safety-related and non-safety electronic process instrumentation. We design, manufacture, inspect, test, and certify repaired, refurbished, and new-replacement equipment within a fullycertified and audited QA program.

Our in-house engineering team combines decades of focused experience to produce new components with proven superior performance and reliability, while maintaining the same certified form, fit, and function as the original equipment.

Our QA Program meets the requirements of 10 CFR 50, Appendix B; ANSI N45.2; ASME NQA-1; and accepts responsibility for 10 CFR Part 21 reporting.



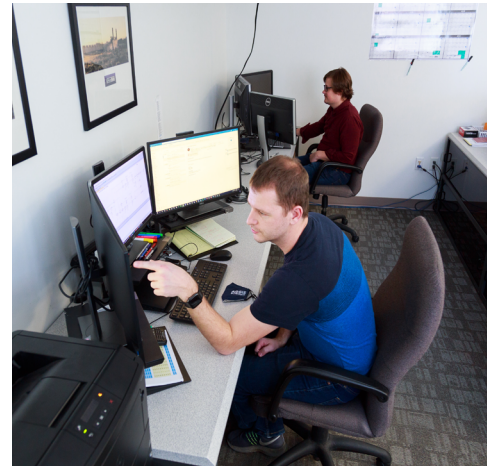
Reengineering and Reverse Engineering

Curtiss-Wright specializes in multiple reengineering and reverse engineering options, including:

- Analog and digital solutions for existing and emerging needs
- Dedicated processes with full QA control
- Unique and custom design / manufacturing
- Successful installments in dozens of nuclear facilities

Refurbishing, replication, and redesign conform to the following applicable standards and guidelines:

- IEEE-323-1974 and 1983 - Qualification of Class 1E Equipment for Nuclear Power Generating Stations
- IEEE-344-1975 and 1987 - Recommended Practice for Seismic Qualification of Class 1E Equipment for Nuclear Power Generating Stations
- EPRI TR-102323 and RG 1.180 for EMI/RFI Qualification available



OEM Repair and Refurbishment

Our certified team of engineers and technicians specialize in maintaining the qualification of your Safety-Related modules throughout repairing and refurbishing. Our dedicated lab can repair most OEM equipment if the technical data is available.

- Fully-documented equivalency evaluations to justify all replacements
- Full 10 CFR 50, Appendix B / NQA-1 QA program and 10 CFR 21 responsibility
- Work completed and inspected to IPC Class 2
- IPC-A-600 Acceptability of Printed Circuit Boards
- IPC-A-610 Acceptability of Electronic Assemblies
- IPC-A-620 Acceptability for Cable & Wire Harness Assemblies
- IPC 7711A Rework of Electronic Assemblies
- IPC 7721A Repair and Modification of PCBs
- Ghost writing 50.59 and equivalency evaluations on client paper upon request



Power Supply Maintenance and Repairs

Electrolytic capacitors are the top cause of degraded performance and failure of power supplies. Repair and refurbishment that replaces capacitors and other heat-and-age-stressed components significantly extends the life of these power supplies.

We currently service power supplies for ATE manufacturers, nuclear utilities, chemical plants, power plants/electric utilities, refineries, newspapers, broadcast, production, media, universities, governments, and many other businesses and industries.

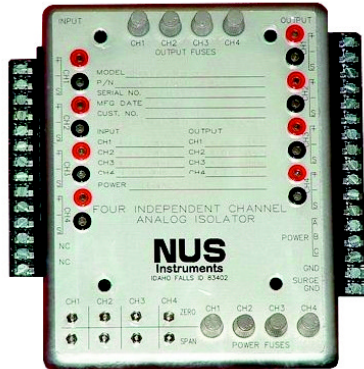
- Eliminates Your Redesign and Engineering Costs
- Full 10 CFR 50, Appendix B / NQA-1 QA program and 10 CFR 21 responsibility
- Nuclear Safety-Related Qualified
- Elevated Temperature Testing
- Full Load Testing To Ensure Performance
- Full One-Year Limited Warranty
- Fast Turn Around, with 48-Hour Expedited Service Available
- Safe and Secure Shipping
- Competitive Pricing



Replacement Instrument Line

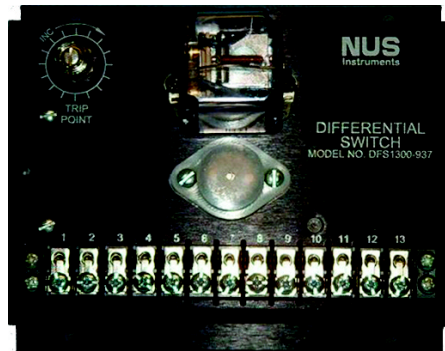
Analog & Digital Class 1 Isolators

NUSI 100, 200, 300, & 400 Series Modules



Single and multi-channel encapsulated analog and digital wallmount devices isolate Class 1E circuits from non-Class 1E circuits

Woodward 2300 Control Modules



Replacements for:

- Defeat Switch
- Differential Switch
- Low Signal Selector
- Speed Sensor

Rosemount 710DU Trip/Calibration System



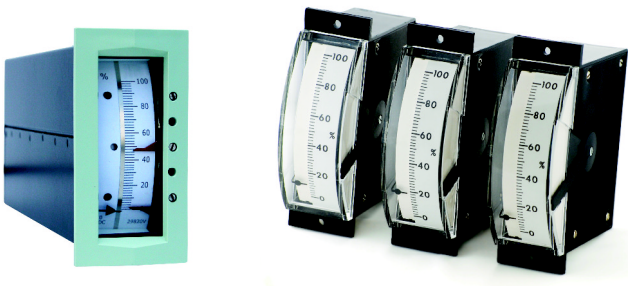
Replacements for:

- Master Trip Unit
- Slave Trip Unit
- Calibration Unit
- Readout Assembly
- Card File
- Meter Scales

Versatile Measuring Instruments and Lisle-Metrix Products

Meters

Replacements for Sigma/International Instruments



Replacements for LFE/API/Triplett

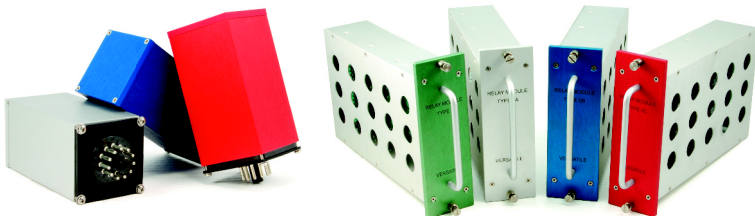


Replacements for Bach Simpson



Relays

Replacements for Potter & Brumfield



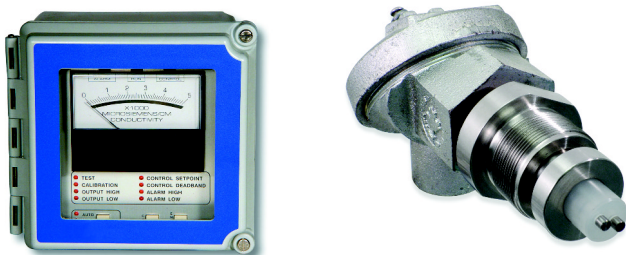
Timers

Replacements for Agastat



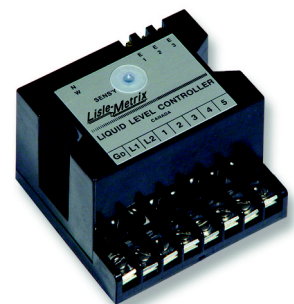
Conductivity

Replacements for Beckman/Lisle-Metrix



Liquid Level Controllers

Replacements for Lisle-Metrix



Replacement Instrument Line

Foxboro H-Line

NUSI 500 & 900 Series Modules



Replacements for Foxboro H-Line

610A	61H	62H	62HB
62HF	63U-A	63U-B	63U-C
63U-D	63U-E	63U-F	66A
66B	66C	66D	66E
66G	66K	66N	66R
66R Special	67H	693A	694A
62H+66B	610A+66B		

Hagan 7100

NUSI 800 Series Modules



Replacements for Hagan

103-709	103-504	103-805	111-118
125-124	127-112	127-113	131-118
137-121	137-122	139-118	

GEMAC 5000

NUSI 900 Series Modules

Replacements for GEMAC

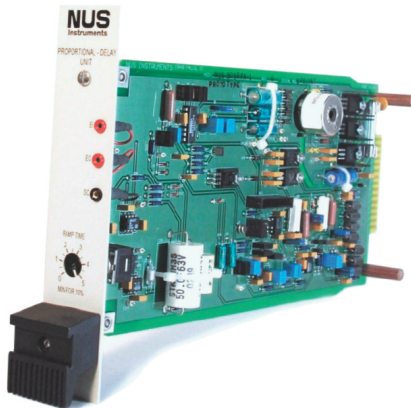


540-01	543-04	550	560-01
560-03	563-02	563-05	564
565	566	567	568
570-06			

Bailey 7000 Series

NUSI 2000 Series Modules

Replacements for Bailey 7000

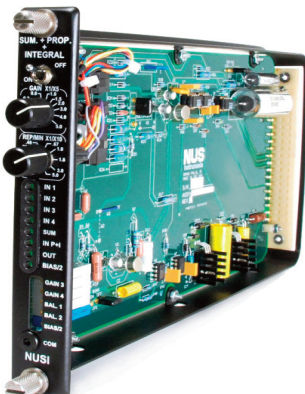


701	711	720	721
722	723	724	7401
7403	744	745	746
750	752	754	755

Bailey 820 & 860

NUSI 2300 & 2400 Series Modules

Replacements for Bailey 820 & 860



6623695	6623817	6623819	6623835
6623840	6624080	6624120	6624125
6624150	6624200	6624261	6624520
6624543	6624610	6624665	6625070
6625160	6625621	6629530	6629536

Contact Information Instrumentation and Controls

1350 Whitewater Drive,
Idaho Falls, ID 83402
USA

T: 208.497.3333
E: Sciencetech-I&C-Sales@curtisswright.com

www.cwnuclear.com

**CURTISS -
WRIGHT**



Scan this QR code for a virtual tour of our Idaho Falls facility

Headquarters: 2950 Birch Street, Brea, CA 92821, U.S.A. | www.cwnuclear.com

Facilities: Berwick, PA | Cincinnati, OH | Clearwater, FL | Cromwell, CT | Danbury, CT | Freeport, PA | Hutchinson, MN | Huntsville, AL | Idaho Falls, ID | Middleburg Heights, OH | Newmarket, Ontario, Canada

While this information is presented in good faith and believed to be accurate, Curtiss-Wright does not guarantee satisfactory results from reliance on such information. Nothing contained herein is to be construed as a warranty or guarantee, expressed or implied, regarding the performance, merchantability, fitness or any other matter with respect to the products, nor as a recommendation to use any product or process in conflict with any patent. Curtiss-Wright reserves the right, without notice, to alter or improve the designs or specifications of the products described herein.