

Commercial Nuclear Power Plant Directory



28th
edition



The intake canal for the Brunswick Nuclear Plant features the “Slide for Life” which is used to minimize impacts on local aquatic life.

Cover Photo: Duke Energy’s Brunswick Nuclear Plant is located near Southport, N.C. and includes two boiling water reactors capable of generating 1,870 megawatts, enough to power more than a million homes.

28th Edition Commercial Nuclear Power Plants



The nuclear industry has seen many changes over the past few years and this 28th edition of Commercial Nuclear Power Plants provides the latest information on plants throughout the world. Curtiss-Wright Nuclear has been a leader in the industry for over 55 years and continues to provide advanced technologies and innovative solutions that sustain the safe and reliable operation of nuclear plants worldwide.

Our product brands – Anatec, AP Services, Enertech, LMT, Netco, Nova, QualTech NP, and Sciencetech – have long been recognized for their unmatched knowledge and technical expertise. We focus on forming long-term partnerships and we invite you to contact Curtiss-Wright for your critical power plant needs.

This directory is available on-line at www.cwnuclear.com. And, our mobile app is available at both the Apple Store and Google Play by searching for Curtiss-Wright. We trust both the directory and app will continue to be valuable resources for you.

Table of Contents

Nuclear Power Technologies	6	Millstone 3.....	17
Operating and Forecasted Reactors	11	Monticello.....	36
Operating License Expiration Dates	12	Nine Mile Point 1.....	30
Guidelines for Plant Profile Tables	14	Nine Mile Point 2.....	30
Operating U.S. Plants		North Anna 1.....	18
Arkansas Nuclear One 1.....	22	North Anna 2.....	18
Arkansas Nuclear One 2.....	22	Oconee 1.....	21
Beaver Valley 1.....	32	Oconee 2.....	21
Beaver Valley 2.....	32	Oconee 3.....	21
Braidwood 1.....	24	Oyster Creek.....	30
Braidwood 2.....	24	Palisades.....	23
Browns Ferry 1.....	41	Palo Verde 1.....	16
Browns Ferry 2.....	41	Palo Verde 2.....	16
Browns Ferry 3.....	42	Palo Verde 3.....	16
Brunswick 1.....	19	Peach Bottom 2.....	31
Brunswick 2.....	19	Peach Bottom 3.....	31
Byron 1.....	25	Perry 1.....	33
Byron 2.....	25	Pilgrim.....	23
Callaway 1.....	15	Point Beach 1.....	35
Calvert Cliffs 1.....	25	Point Beach 2.....	35
Calvert Cliffs 2.....	25	Prairie Island 1.....	36
Catawba 1.....	19	Prairie Island 2.....	36
Catawba 2.....	19	Quad Cities 1.....	31
Clinton.....	26	Quad Cities 2.....	31
Columbia.....	22	River Bend.....	24
Comanche Peak 1.....	34	Robinson 2.....	21
Comanche Peak 2.....	34	Salem 1.....	38
Cooper.....	35	Salem 2.....	38
D.C. Cook 1.....	15	Seabrook 1.....	36
D.C. Cook 2.....	15	Sequoyah 1.....	42
Davis-Besse.....	32	Sequoyah 2.....	42
Diablo Canyon 1.....	37	South Texas Project 1.....	40
Diablo Canyon 2.....	37	South Texas Project 2.....	40
Dresden 2.....	26	St. Lucie 1.....	33
Dresden 3.....	26	St. Lucie 2.....	33
Duane Arnold.....	35	Summer.....	38
Farley 1.....	39	Surry 1.....	18
Farley 2.....	39	Surry 2.....	18
Fermi 2.....	17	Susquehanna 1.....	41
FitzPatrick.....	26	Susquehanna 2.....	41
Ginna.....	27	Three Mile Island 1.....	32
Grand Gulf 1.....	22	Turkey Point 3.....	33
Harris 1.....	20	Turkey Point 4.....	34
Hatch 1.....	39	Vogtle 1.....	40
Hatch 2.....	39	Vogtle 2.....	40
Hope Creek.....	37	Waterford 3.....	24
Indian Point 2.....	23	Watts Bar 1.....	43
Indian Point 3.....	23	Watts Bar 2.....	43
LaSalle 1.....	27	Wolf Creek.....	43
LaSalle 2.....	27	Map of Operating U.S. Nuclear Plants	28
Limerick 1.....	27	International Nuclear Power Plants	44
Limerick 2.....	30	Argentina.....	44
McGuire 1.....	20	Armenia.....	44
McGuire 2.....	20	Bangladesh.....	44
Millstone 2.....	17	Belarus.....	44

Commercial Nuclear Power Plants

Belgium	44	Entergy Nuclear Generation Co	23
Brazil.....	44	Entergy Nuclear Indian Point 2, LLC	23
Bulgaria	44	Entergy Nuclear Indian Point 3, LLC	23
Canada.....	44	Entergy Nuclear Palisades, LLC	23
China, Peoples Republic of	45	Exelon Corp	24, 25, 26, 27, 30, 31, 32, 38
Czech Republic.....	46	Exelon Generation Co, LLC	24, 25, 26, 27, 30, 31, 32
Finland.....	46	FirstEnergy	32, 33
France	46	FirstEnergy Nuclear Operating Co.....	32, 33
Germany	48	Florida Municipal Power Agency	33
Hungary	48	Florida Power & Light Co.....	33, 34
India	48	Georgia Power Co.....	39, 40
Iran	49	Green Mountain Power Corp.....	17
Japan	49	Kansas City Power & Light Co.....	43
Korea, Republic of	50	Kansas Electric Power Coop	43
Mexico.....	51	Kansas Gas & Electric Co.....	43
Netherlands.....	51	Long Island Power Authority (LIPA)	30
Pakistan.....	51	Los Angeles Dept. of Water & Power	16
Romania	51	Luminant Generation Co.....	34
Russia.....	51	Massachusetts Municipal Wholesale Elec Co	17, 36
Slovakia.....	52	MidAmerican Energy Co	31
Slovenia.....	52	Municipal Electric Authority of Georgia	39, 40
South Africa.....	52	Nebraska Public Power District	35
Spain	52	NextEra Energy Resources	35
Sweden	52	NextEra Energy Duane Arnold	35
Switzerland.....	52	NextEra Energy Point Beach	35
Taiwan	53	NextEra Energy Seabrook.....	36
Ukraine	53	Nine Mile Point Nuclear Station, LLC	30
United Arab Emirates.....	53	North Carolina Electric Mem. Corp.....	19
United Kingdom	53	North Carolina Municipal Power Agency #1	19
Index of U.S. Owners/Operators		Northern States Power Co.....	36
Alabama Power.....	39	NRG Energy	40
Allegheny Electric Coop.....	41	Oglethorpe Power Corp.....	39, 40
Ameren Missouri	15	Ohio Edison Co.....	32, 33
American Electric Power Co	15	Old Dominion Electric Coop	18
Arizona Public Service Co.....	16	Orlando Utilities Commission.....	33
Austin Energy	40	Pacific Gas & Electric Co.....	37
Calvert Cliffs Nuclear Power Plant, LLC.....	25	PG&E Corp.....	37
Central Iowa Power Coop.....	35	Piedmont Municipal Power Agency	19
Corn Belt Power Coop.....	35	PSEG Nuclear, LLC.....	37, 38
CPS Energy	40	PSEG Power	31, 37, 38
Dalton Utilities	39, 40	Public Service Co. of New Mexico	16
Detroit Edison Co.....	17	R. E. Ginna Nuclear Power Plant, LLC	27
Dominion Generation	17, 18	Salt River Project	16
Dominion Resources, Inc.....	17, 18	Santee Cooper.....	38
Dominion Virginia Power.....	18	South Carolina Electric & Gas Co.....	38
DTE Energy Co.....	17	Southern California Edison Co.....	16
Duke Energy	19, 20, 21	Southern California Public Power Authority	16
Duke Energy Carolinas.....	20, 21	Southern Nuclear Operating Co	39, 40
Duke Energy Progress	19, 20, 21	South Mississippi Elec. Power Assoc.....	22
El Paso Electric Co	16	STP Nuclear Operating Co	40
Entergy	22, 23, 24	Susquehanna Nuclear, LLC.....	41
Energy Northwest.....	22	System Energy Resources	22
Entergy Arkansas, Inc	22	Tennessee Valley Authority.....	41, 42, 43
Entergy Gulf States Louisiana, LLC.....	24	Wolf Creek Nuclear Operating Corp.....	43
Entergy Louisiana, LLC.....	24	Xcel Energy	36



Nuclear Power Technologies

Curtiss-Wright Nuclear provides a comprehensive range of products and services that sustain the safe, reliable, and cost-effective operation of nuclear power plants worldwide. We offer proactive solutions to critical plant obsolescence issues, and we provide innovative technologies in support of Plant Life Extension and Delivering the Nuclear Promise.

Our Quality Assurance programs are maintained at the highest standards of excellence in support of rigorous industry requirements including:

- ASME Section III (N, NPT/MO, NA, NS), Class 1, 2, 3, MC
- ASME Section XI; National Board NR Stamp
- ASME/ANSI NQA-1
- 10CFR50 Appendix B, 10CFR21
- 10 CFR 71 Sub-Part H, 10 CFR 72 Sub-Part G
- 10 CFR 830:120-122
- ANSI 45.2, ANSI 18.7
- ANS 56.2 Appendix J
- ANSI/ANS-15.8-1995
- IEEE 323, 344, 382
- CSA N-285, Z299.1, 2, 3, 4 (Canada)
- RCC-M and RCC-E A 5000

We are audited by NIAC and NUPIC (with observation by the NRC).

Further, our quality programs meet international requirements of nuclear power plant licensees, owners, operators and suppliers worldwide.

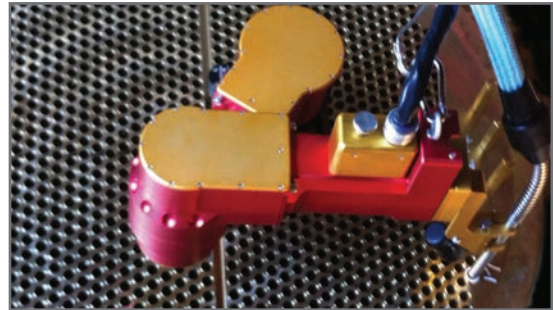
We invest in new companies, new technology, expand technical staffing and infrastructure to strengthen our capabilities and industry support. Our business units provide unmatched knowledge, experience and technical superiority, making Curtiss-Wright ready and able to meet the demands of existing operating reactors, as well as the future fleet of nuclear power plants.

Contact us at nuclear@curtisswright.com.



Anatec

NDE inspection, quality programs and technical training services



Steam Generator Eddy Current Testing (S/G ECT)

S/G ECT Independent Data Analysis
Independent Qualified Data Analysts
ET Program Oversight
Data Management, Data Acquisition, and Tube Repair Personnel

BOP Heat Exchanger Services

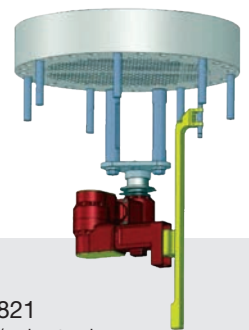
BOP Heat Exchanger Tubing Inspection
Data Management, Data Acquisition, and Tube Repair Personnel
Heat Exchanger Maintenance
Heat Exchanger Condition Assessment

Advanced ET Systems

Remote Acquisition Manipulator Systems
Remote Analysis Capability (VPN, FTP)
Automated Data Analysis
Array Probe and MRPC Inspection Capability

Training

Qualification and Certification Training
EPRI QDA Training
Remote Field Testing Training
Outside Agency Services



Contact

2950 E. Birch Street, Brea, CA 92821
<http://www.cwnuclear.com/brands/scientech>
Tel: 920.657.1350 or email anatec-lmt@curtisswright.com

AP Services

Best-in-class fluid sealing products and innovative sealing solutions



Fluid Sealing Products

Mechanical packing

Gaskets: compressed rubber, metal, Teflon, graphite, fiber

Textile products: rope, tape, specialty

Graphite pressure seals, mechanical seals

Expansion joints

Charging pump packing

sealPRO—Fluid Leak Management (FLM)

FLM web-based software solution

Dashboard displays pertinent, role-based information

Ties all aspects of FLM together in one place

sealID—Stock Identification Program

Web-based inventory

Full item description, part number, picture

Consolidate and manage inventory effectively

Accessible anytime from anywhere

Obsolescence support, reverse engineering

sealOE—Problem and Solution Resource

Thousands of industry proven sealing solutions

sealTECH—Valve Management Services

Outage support; turnkey repacks

Program development; FLM and packing

assessment, PE and materials support

Training



Contact

203 Armstrong Drive, Freeport, PA 16229

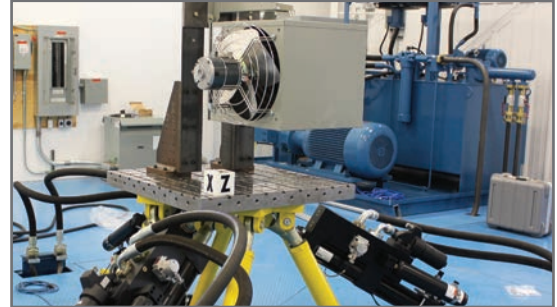
<http://www.cwnuclear.com/brands/ap-services>

Tel: 724.295.6200 or email fre_sales@curtisswright.com

Curtiss-Wright Nuclear Canada



CGD, Seismic and EQ Services for CANDU reactor technologies



CGD, Seismic and EQ Services

Highly structured dedication process

Obsolescence solutions and parts sourcing

Seismic and Environmental qualification experts

Multiple seismic, LOCA, HELB / MSLB simulators

Analysis and Obsolescence Solutions

Environmental qualification analysis

Software qualification

Cyber security and gap assessment

Reverse engineering

Instrumentation & Control

Versatile Measuring Instruments

Lisle-Metrix legacy designs

Analog electronics

Conductivity sensors and transmitters



Contact

165 Pony Drive, Newmarket, Ontario L3Y 7B5

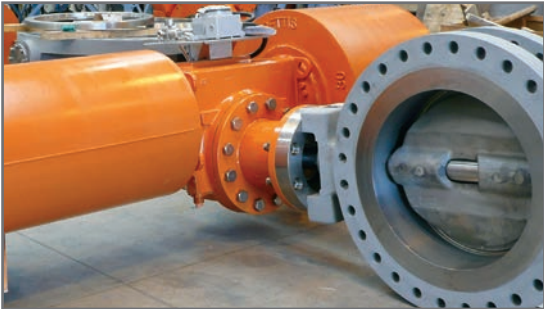
<http://www.cwnuclear.com/brands/qualtech-np>

Tel: 905.954.0841 or email cwnc@curtisswright.com

Enertech



Advanced valves, actuators, instrumentation and engineering services



Flow Control Products

Valves: ball, butterfly, check, gate, globe, pressure relief, solenoid
Actuators: pneumatic, electric, electro-hydraulic
Instrumentation and condition monitoring
Transducers and filter regulators
Diagnostics and test equipment
Snubbers and piping support

Regulatory/PLEX/Plant Modernization

Design change system engineering
Equivalency evaluation
Specification reviews
Obsolescence solutions

Outage, Field, Factory Services

Major component maintenance, repair, upgrades
Outage support

Plant System Reliability Support

Hardened Vents, Service Water, Feedwater, CCW, Condensate, ECCS, Instrument Air, and others



Contact

2950 E. Birch Street, Brea, CA 92821
<http://www.cwnuclear.com/brands/enertech>
Tel: 714.528.2301 or email enertech@curtisswright.com

LMT



NDE services using the latest technology, procedures and programs



NDE Services

General NDE Applications (PSI / ISI / FAC / BOP)
ASME Program Development/Review
Consulting Services
Condition Assessment

Advanced NDE Solutions

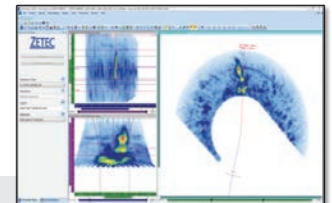
PAUT for PSI & ISI Applications
PAUT in Lieu of RT for ASME R&R Applications
PAUT of Socket Welded Joints for PLEX Applications
Guided Wave Testing

Quality Services & Programs

Quality Control and Quality Assurance
Welding Inspection (AWS, CWI)
Quality Services from Fabrication to Installation
Quality Program Review and Audit Support

Training

Qualification and Certification Training
Advanced NDE Solutions & Techniques
Performance Demonstration Initiative Preparation



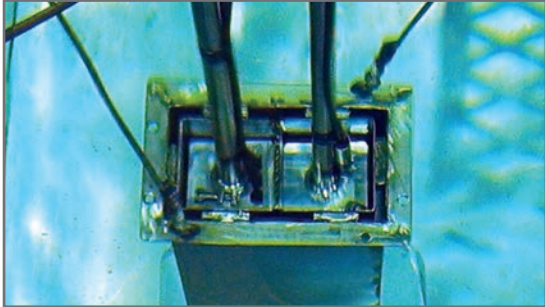
Contact

980 2nd Avenue SE, Suite B, Hutchinson, MN 55350
<http://www.cwnuclear.com/brands/scientech>
Tel: 320.316.3531 or email anatec-lmt@curtisswright.com



Netco

Neutron absorber solutions for spent fuel storage applications



Netco-SNAP-IN®

Neutron absorbing insert extends the life of the spent fuel rack
Resolves Boraflex degradation issues
Snaps into existing rack

Pinserts

Neutron absorbing fuel bundle insert for wet and dry storage

Spent Fuel Management

Products and service solutions that address performance of neutron-absorbing materials in spent fuel storage racks

Testing and Analytical Services

Badger (in-situ spent fuel storage rack and density measurement)
Analytical services
Criticality analysis
Racklife modeling
Shielding analysis

Laboratory Testing

Neutron absorbing material qualification
Spent fuel pool surveillance coupon testing



Contact

44 Shelter Rock Road, Danbury, CT 06810
<http://www.cwnuclear.com/brands/scientech>
Tel: 203.448.3310 or email netco@curtisswright.com



Nova

Safety-related fasteners, precision components and bolting solutions



Fasteners – Precision Components

ASME Code, safety-related, commercial,
MIL-Spec and specialty fasteners
Standard and specialty fasteners
Precision machined components
Fabrication and assembly
Engineered products

Engineering and Manufacturing

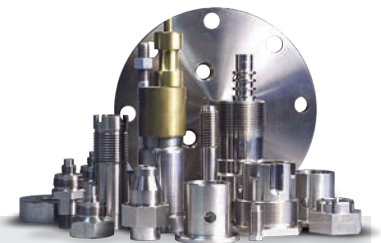
Standardization and consolidation
Reverse engineering, obsolescence programs
Replacements for obsolete parts
Custom manufacturing

Bolting Solutions

Bolt tensioning systems
HydraNut® and Tensor reactor vessel systems
Stud and nut runners
Multi-stud lifting devices and racks
PlasmaBond® lubricant

Safety-Related Construction Systems

UNISTRUT® metal framing
Cable trays
Pipe hangers
Anchoring systems
Structural bolting



Contact

18001 Sheldon Road, Middleburg Heights, OH 44130
<http://www.cwnuclear.com/brands/nova>
Tel: 216.267.3200 or email nova@curtisswright.com

QualTech NP



CGD, Seismic and EQ testing, HVAC and containment electrical connection products



CGD, Seismic and EQ Services

- Highly structured dedication process
- Obsolescence solutions and parts sourcing
- Seismic and Environmental qualification experts
- Multiple seismic, LOCA, HELB / MSLB simulators

HVAC Systems and Components

- Safety-related or commercial
- Chillers, air handling units, fans and motors
- Heat exchangers, electric heaters
- Dampers, filters, purge units and separators

Class 1E Electrical Connection Solutions

- EGS brand quick disconnect connector (QDC)
- Electrical penetration assemblies (EPAs)
- Reactor and I&C electrical cable assemblies
- Electrical splicing products

Airlock Integrity Maintenance Service

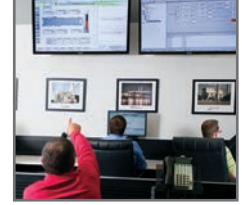
- Onsite inspections and service
- Refurbishments
- Mechanical and electrical spare parts
- Replacement seals



Contact

4600 East Tech Drive, Cincinnati, OH 45245
<http://www.cwnuclear.com/brands/qualtech-np>
Tel: 513.528.7900 or email qtquotes@curtisswright.com

Sciencetech



Products and services that enhance the safety and reliability of plants



Plant Services, Web-based Applications

- Security screening/access control
- Mobile technology
- Safety and risk programs
- PRA studies and updates
- Regulatory and information services
- RAPID (virtual inventory)

Plant Performance Systems and Software

- Plant process computers
- Control systems
- Performance improvement programs
- Plant/condition monitoring
- Real Time data acquisition
- Cycle Isolation

Engineered Products

- Engineering and consulting services
- Reactor and steam generator servicing equipment
- Conventional and rotational nozzle dams
- Electronic digital consoles
- In-air and underwater lights
- High and low radiation cameras

Electrical and I&C Products

- Analog instrumentation
- Reverse engineering and replacement
- Obsolescence programs, parts and databases
- Power supply repair and replacement
- Wireless Instrumentation/Sensors



Contact

1350/1360 Whitewater Drive, Idaho Falls, ID 83402
<http://www.cwnuclear.com/brands/sciencetech>
Tel: 208.497.3333 or email sciencetech@curtisswright.com

Operating and Forecasted Reactors

Country	Operating	Construction	Planned*
Argentina	3	1	4
Armenia	1	0	1
Bangladesh	0	1	1
Belarus	0	2	2
Belguim	7	0	0
Brazil	2	1	4
Bulgaria	2	0	1
Canada	19	0	2
Chile	0	0	4
China	38	20	182
Czech Republic	6	0	3
Egypt	0	0	4
Finland	4	1	1
France	58	1	0
Germany	7	0	0
Hungary	4	0	2
India	22	6	65
Indonesia	0	0	5
Iran	1	0	11
Israel	0	0	1
Japan	42	2	12
Jordan	0	0	2
Kazakhstan	0	0	3
Korea (North)	0	0	1

Country	Operating	Construction	Planned*
Korea (South)	24	4	7
Lithuania	0	0	2
Malaysia	0	0	2
Mexico	2	0	3
Netherlands	1	0	0
Pakistan	5	2	1
Poland	0	0	6
Romania	2	0	2
Russia	37	5	48
Saudi Arabia	0	0	16
Slovakia	4	2	1
Slovenia	1	0	1
South Africa	2	0	8
Spain	7	0	0
Sweden	8	0	0
Switzerland	5	0	3
Taiwan	6	2	0
Thailand	0	0	5
Turkey	0	0	12
Ukraine	15	0	13
United Arab Emirates	0	4	10
United Kingdom	15	0	13
United States	99	2	35
Vietnam	0	0	10

Source: world-nuclear.org
* Includes planned and proposed plants

Operating License Expiration Dates

2013

Indian Point 2*

2015

Indian Point 3*

2024

Diablo Canyon 1
Waterford 3

2025

Diablo Canyon 2
River Bend

2026

Clinton
Perry 1

2029

Dresden 2
Ginna
Nine Mile Point 1
Oyster Creek

2030

Comanche Peak 1
Monticello
Point Beach 1
Robinson 2
Seabrook 1

2031

Dresden 3
Palisades

2032

Pilgrim
Quad Cities 1
Quad Cities 2
Surry 1
Turkey Point 3

2033

Browns Ferry 1
Comanche Peak 2
Fort Calhoun
Oconee 1
Oconee 2
Peach Bottom 2
Point Beach 2
Prairie Island 1
Surry 2
Turkey Point 4

2034

Arkansas Nuclear One 1
Browns Ferry 2
Brunswick 2
Calvert Cliffs 1
D.C. Cook 1
Cooper
Duane Arnold
FitzPatrick
Hatch 1
Oconee 3
Peach Bottom 3
Prairie Island 2
Three Mile Island 1

2035

Millstone 2
Watts Bar 1

2036

Beaver Valley 1
Browns Ferry 3
Brunswick 1
Calvert Cliffs 2
Salem 1
St. Lucie 1

2037

Davis-Besse
D.C. Cook 2
Farley 1

2038

Arkansas Nuclear One 2
Hatch 2
North Anna 1

2040

North Anna 2
Salem 2
Sequoyah 1

2041

Farley 2
McGuire 1
Sequoyah 2

2042

LaSalle 1
Summer
Susquehanna 1

2043

Catawba 1
Catawba 2
Columbia
LaSalle 2
McGuire 2
St. Lucie 2

2044

Byron 1
Callaway 1
Grand Gulf 1
Limerick 1
Susquehanna 2
Vermont Yankee

2045

Fermi 2
Millstone 3
Palo Verde 1
Wolf Creek

2046

Braidwood 1
Byron 2
Harris 1
Hope Creek
Nine Mile Point 2
Palo Verde 2

2047

Beaver Valley 2
Braidwood 2
Palo Verde 3
South Texas Project 1
Vogtle 1

2048

South Texas Project 2

2049

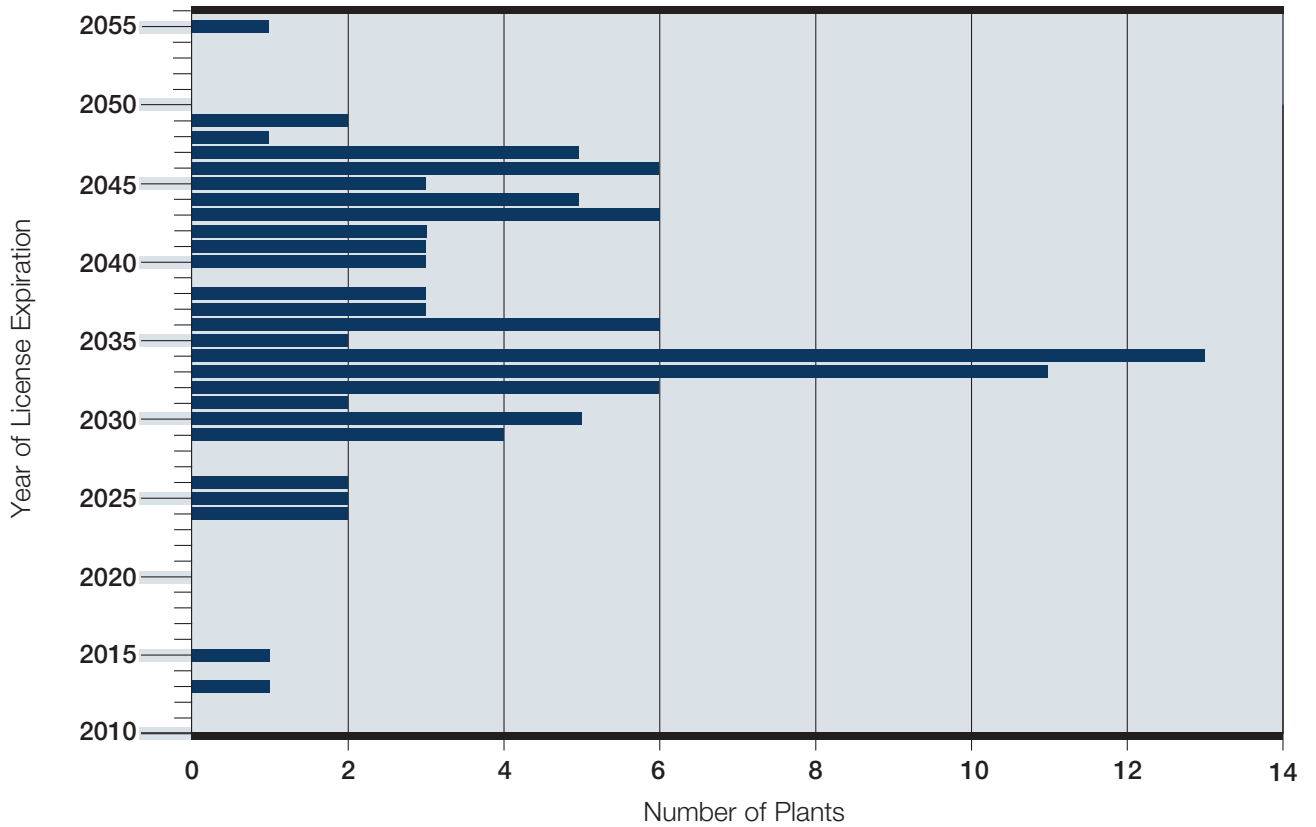
Limerick 2
Vogtle 2

2055

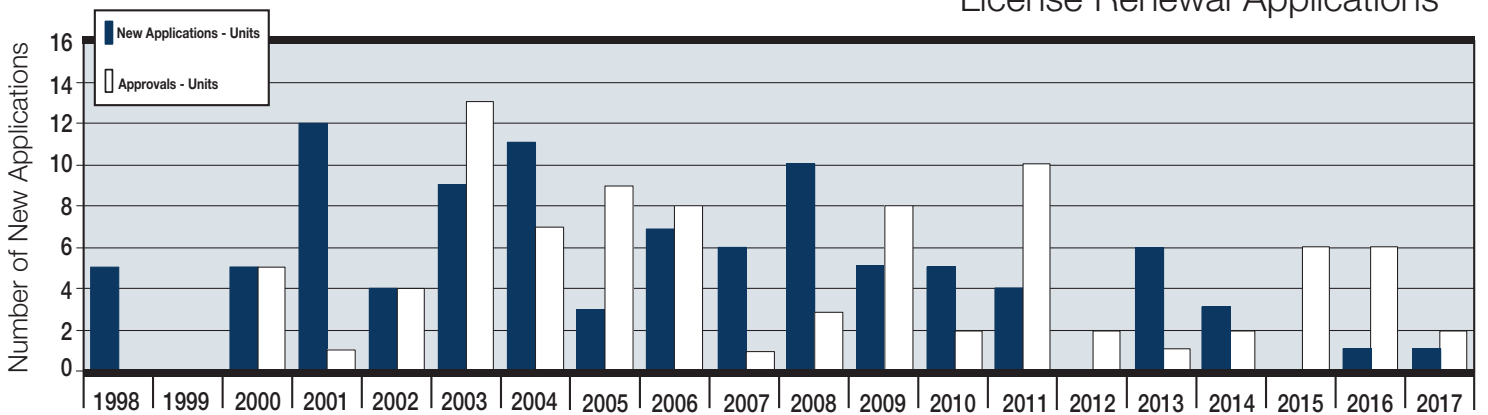
Watts Bar 2

*License renewal process ongoing; under review

U.S. Commercial Nuclear Power Reactor License Expiration Dates



U.S. Commercial Nuclear Power Reactor License Renewal Applications



Guidelines for Plant Profile Tables

This publication was assembled and designed by Curtiss-Wright to be an easily accessible, concise reference guide to basic information about commercial nuclear power plants. To assist in your review of the plant profile tables on the following pages, we offer the following guidelines:

Utility plant operators and owners are named at the top of each page and are arranged alphabetically. In cases where plants are

not wholly owned, the co-owners are listed with the corresponding percentages of ownership. The nuclear units are listed horizontally under the plant operators. Indexes of operators/owners and plants are provided at the front of this booklet. Abbreviations used throughout are provided below.

Abbreviations

A-C	Allis-Chalmers/Allis-Chalmers Power Systems, Inc.
AEPSC	American Electric Power Service Corp.
B&W	Babcock & Wilcox
Baldwin	Baldwin Associates
BBC	Brown Boveri & Cie
Bechtel	Bechtel Power Corp.
Brown & Root	Brown & Root, Inc.
Burns & Roe	Burns & Roe, Inc.
CE	Combustion Engineering
Daniel	Daniel International Co.
E	Extended Uprate (>5%)
Ebasco	Ebasco Services, Inc.
FPI	Fluor Pioneer, Inc.
G&H	Gibbs & Hill, Inc.
GE	General Electric Co.
GEC	GEC Turbine Generators, Ltd..
GHD&R	Gibbs, Hill, Durham & Richardson, Inc.
Gilbert	Gilbert Associates, Inc.
Jones	J.A. Jones Construction Co.
Kaiser	Kaiser Engineers
K-U	Kraftwerk Union
MUR	Measurement Uncertainty Recapture
Parsons	Ralph M. Parsons Co.
PSE	Pioneer Services and Engineering
S	Stretch Uprate
S&L	Sargent & Lundy
S&W	Stone & Webster Engineering Corp.
SCSI	Southern Company Services, Inc.
Siemens	Siemens AG
STARS	Strategic Teaming and Resource Sharing
U.S.A.	Utilities Service Alliance
UE&C	United Engineers & Constructors, Inc.
WEDCO	Westinghouse Construction Subsidiary
Westinghouse	Westinghouse Electric Co.

Containment Design Explanation

Dry Containment	Type 1	Steel sphere
	Type 2	Steel cylinder
	Type 3	Reinforced concrete cylinder with steel liner
Pressure Suppression Containment	Type 4	Steel drywell and wetwell
	Type 5	Reinforced concrete drywell and wetwell with steel liner
	Type 6	Steel drywell and reinforced concrete wetwell with steel liner
Primary Vessel Containment	Type 7	Reinforced concrete pressure vessel
Features	a	Post-tensioned vertically only
	b	Post-tensioned in three directions
	c	Ice condenser
	d	Subatmospheric
	e	Secondary containment, reinforced concrete shield building, for Types 1 and 2
	f	Secondary containment, steel enclosure building, for Type 3
	g	Secondary containment, concrete and/or steel, for Types 4, 5, and 7
	h	Primary containment following suppression, reinforced concrete with steel liner, for Type 5

Operator	Ameren Missouri	American Electric Power Co.	
Owner(s)	Ameren Missouri <i>STARS Member</i>	American Electric Power Co. <i>USA Member USA Member</i>	
Nuclear Unit	Callaway 1	D.C. Cook 1	D.C. Cook 2
Web Address	ameren.com	aep.com	aep.com
NRC Docket No.	50-483	50-315	50-316
Location	Steedman, MO	Bridgman, MI	Bridgman, MI
Type	PWR	PWR	PWR
Orig. Licensed MWt	3411	3250	3391
Up rated MWt	3565 (S)	3304 (MUR)	3568 (S)
Design Capacity MWe	1171	1030	1100
Containment	Type 3b	Type 3c	Type 3c
Cooling	Tower (Natural)	Lake Michigan	Lake Michigan
NSSS Supplier	Westinghouse	Westinghouse	Westinghouse
Turbine Mfg.	GE	GE	BBC
Engineer	Bechtel	AEPSC	AEPSC
Constructor	Daniel	AEPSC	AEPSC
Cask Model	HI-STORM UMAX	HI-STORM 100	HI-STORM 100
Cask Vendor	Holtec Int'l	Holtec Int'l	Holtec Int'l
License Type	General	General	General
Announced	07-16-73	07-20-67	07-20-67
Application Docketed	06-21-74	12-20-67	12-20-67
Construction Permit	04-16-76	03-25-69	03-25-69
Operating License	06-11-84	10-25-74	12-23-77
Initial Criticality	10-02-84	01-18-75	03-10-78
Commercial Operation	12-19-84	08-23-75	07-01-78
Original License Exp.	10-18-24	10-25-14	12-23-17
Renewal Application	12-19-11	10-31-03	10-31-03
Renewal Approved	03-08-15	08-30-05	08-30-05
Renewal License Exp.	10-18-44	10-25-34	12-23-37
Notes:			

Operator		Arizona Public Service Co.		
Owner(s)	Arizona Public Service Co.	29.10%		
	Salt River Project	17.49%		
	El Paso Electric Co.	15.80%		
	Southern California Edison Co.	15.80%		
	Public Service Co. of New Mexico	10.20%		
	Southern California Public Power Authority	5.91%		
	Los Angeles Department of Water & Power	5.70%		
	<i>STARS Member</i>	<i>STARS Member</i>	<i>STARS Member</i>	
Nuclear Unit	Palo Verde 1	Palo Verde 2	Palo Verde 3	
Web Address	aps.com	aps.com	aps.com	
NRC Docket No.	50-528	50-529	50-530	
Location	Wintersburg, AZ	Wintersburg, AZ	Wintersburg, AZ	
Type	PWR	PWR	PWR	
Orig. Licensed MWt	3800	3800	3800	
Up rated MWt	3990	3990	3990	
Design Capacity MWe	1221	1304	1304	
Containment	Type 3b	Type 3b	Type 3b	
Cooling	Towers (Mechanical)	Towers (Mechanical)	Towers (Mechanical)	
NSSS Supplier	CE	CE	CE	
Turbine Mfg.	GE	GE	GE	
Engineer	Bechtel	Bechtel	Bechtel	
Constructor	Bechtel	Bechtel	Bechtel	
Cask Model	NAC-UMS	NAC-UMS	NAC-UMS	
Cask Vendor	NAC Int'l	NAC Int'l	NAC Int'l	
License Type	General	General	General	
Announced	10-30-73	10-30-73	10-30-73	
Application Docketed	10-07-74	10-07-74	10-07-74	
Construction Permit	05-25-76	05-25-76	05-25-76	
Operating License	12-31-84	12-09-85	03-25-87	
Initial Criticality	05-25-85	04-18-86	10-25-87	
Commercial Operation	01-28-86	09-19-86	01-08-88	
Original License Exp.	06-01-25*	04-24-26*	11-25-27*	
Renewal Application	12-15-08	12-15-08	12-15-08	
Renewal Approved	04-21-11	04-21-11	04-21-11	
Renewal License Exp.	06-01-45	04-24-46	11-25-47	
Notes:	* Granted extension to recapture low power to full power license issuance			

Operator	Detroit Edison Co.	Dominion Generation	
Owner(s)	DTE Energy Co. <i>USA Member</i>	Dominion Resources, Inc.	Dominion Resources, Inc. 93.47% Massachusetts Municipal Wholesale Elec. Co. 4.80% Green Mountain Power Corp. 1.73%
Nuclear Unit	Fermi 2	Millstone 2	Millstone 3
Web Address	detroitedison.com	dom.com	dom.com
NRC Docket No.	50-341	50-336	50-423
Location	Newport, MI	Waterford, CT	Waterford, CT
Type	BWR/4	PWR	PWR
Orig. Licensed MWt	3292	2560	3411
Up rated MWt	3430 (S)	2700 (S)	3650
Design Capacity MWe	1093	870	1159
Containment	Type 4g (Mark I)	Type 3bf	Type 3df
Cooling	Towers (Natural)	Niantic Bay	Niantic Bay
NSSS Supplier	GE	CE	Westinghouse
Turbine Mfg.	GEC	GE	GE
Engineer	Utility	Bechtel	S&W
Constructor	Parsons/Daniel	Bechtel	S&W
Cask Model	HI-STORM 100	NUHOMS-32PT	NUHOMS-32PT
Cask Vendor	Holtec Int'l	Transnuclear	Transnuclear
License Type	General	General	General
Announced	07-26-68	12-67	10-72
Application Docketed	04-29-69	02-28-69	02-10-73
Construction Permit	09-26-72	12-11-70	08-09-74
Operating License	03-20-85	08-01-75	11-25-85
Initial Criticality	06-21-85	10-17-75	01-23-86
Commercial Operation	01-23-88	12-26-75	04-23-86
Original License Exp.	03-20-25	07-31-15	11-25-25
Renewal Application	04-30-14	01-22-04	01-22-04
Renewal Approved	12-15-16	11-28-05	11-28-05
Renewal License Exp.	03-20-45	07-31-35	11-25-45
Notes:			

Operator		Dominion Generation		
Owner(s)	Dominion Virginia Power 88.40% Old Dominion Elec. Coop. 11.60%		Dominion Resources, Inc.	
Nuclear Unit	North Anna 1	North Anna 2	Surry 1	Surry 2
Web Address	dom.com	dom.com	dom.com	dom.com
NRC Docket No.	50-338	50-339	50-280	50-281
Location	Mineral, VA	Mineral, VA	Surry, VA	Surry, VA
Type	PWR	PWR	PWR	PWR
Orig. Licensed MWt	2775	2775	2441	2441
Up rated MWt	2893 (S)	2893 (S)	2546 (S)	2546 (S)
Design Capacity MWe	907	907	788	788
Containment	Type 3d	Type 3d	Type 3d	Type 3d
Cooling	Lake Anna	Lake Anna	James River	James River
NSSS Supplier	Westinghouse	Westinghouse	Westinghouse	Westinghouse
Turbine Mfg.	Westinghouse	Westinghouse	Westinghouse	Westinghouse
Engineer	S&W	S&W	S&W	S&W
Constructor	S&W	S&W	S&W	S&W
Cask Model	NUHOMS-HD-32PTH	NUHOMS-HD-32PTH	NUHOMS-HD-32PTH	NUHOMS-HD-32PTH
Cask Vendor	Transnuclear	Transnuclear	Transnuclear	Transnuclear
License Type	Site-Specific/General	Site-Specific/General	Site-Specific/General	Site-Specific/General
Announced	10-12-67	10-12-67	10-04-66	10-04-66
Application Docketed	03-21-69	03-21-69	03-20-67	03-20-67
Construction Permit	02-19-71	02-19-71	06-25-68	06-25-68
Operating License	11-26-77	04-11-80	05-25-72	01-29-73
Initial Criticality	04-05-78	06-12-80	07-01-72	03-07-73
Commercial Operation	06-06-78	12-14-80	12-22-72	05-01-73
Original License Exp.	04-01-18	08-21-20	05-25-12	01-29-13
Renewal Application	05-29-01	05-29-01	05-29-01	05-29-01
Renewal Approved	03-20-03	03-20-03	03-20-03	03-20-03
Renewal License Exp.	04-01-38	08-21-40	05-25-32	01-29-33
Notes:				

Operator		Duke Energy				
Owner(s)	Duke Energy Progress		N. Carolina Electric Mem. Corp. 61.51%	N. Carolina Mun. Power Agency #1 75%	Duke Energy 38.49%	Piedmont Mun. Power Agency 25%
Nuclear Unit	Brunswick 1	Brunswick 2	Catawba 1	Catawba 2		
Web Address	duke-energy.com	duke-energy.com	duke-energy.com	duke-energy.com		
NRC Docket No.	50-325	50-324	50-413	50-414		
Location	Southport, NC	Southport, NC	York, SC	York, SC		
Type	BWR/4	BWR/4	PWR	PWR		
Orig. Licensed MWt	2436	2436	3411	3411		
Up rated MWt	2923 (S, E)	2923 (S, E)				
Design Capacity MWe	821	821	1145	1145		
Containment	Type 5g (Mark I)	Type 5g (Mark I)	Type 2c	Type 2c		
Cooling	Cape Fear River	Cape Fear River	Towers (Mechanical)	Towers (Mechanical)		
NSSS Supplier	GE	GE	Westinghouse	Westinghouse		
Turbine Mfg.	GE	GE	GE	GE		
Engineer	UE&C	UE&C	Utility	Utility		
Constructor	Brown & Root	Brown & Root	Utility	Utility		
Cask Model	NUHOMS-HD-61BTH	NUHOMS-HD-61BTH	NAC-UMS	NAC-UMS		
Cask Vendor	Transnuclear	Transnuclear	NAC Int'l	NAC Int'l		
License Type	General	General	General	General		
Announced	01-24-68	01-24-68	07-26-72	07-26-72		
Application Docketed	07-31-68	07-31-68	10-27-72	10-27-72		
Construction Permit	02-07-70	02-07-70	08-07-75	08-07-75		
Operating License	09-08-76	12-27-74	07-18-84	02-24-86		
Initial Criticality	10-08-76	03-20-75	01-07-85	05-08-86		
Commercial Operation	03-18-77	11-03-75	06-29-85	08-19-86		
Original License Exp.	09-08-16	12-27-14	12-06-24	02-24-26		
Renewal Application	10-18-04	10-18-04	06-14-01	06-14-01		
Renewal Approved	06-26-06	06-26-06	12-05-03	12-05-03		
Renewal License Exp.	09-08-36	12-27-34	12-05-43	12-05-43		
Notes:						

Operator		Duke Energy		
Owner(s)	Duke Energy Progress			Duke Energy Carolinas
Nuclear Unit	Harris 1	McGuire 1	McGuire 2	
Web Address	duke-energy.com	duke-energy.com	duke-energy.com	
NRC Docket No.	50-400	50-369	50-370	
Location	New Hill, NC	Huntersville, NC	Huntersville, NC	
Type	PWR	PWR	PWR	
Orig. Licensed MWt	2775	3411	3411	
Up rated MWt	2948 (MUR, S)			
Design Capacity MWe	900	1180	1180	
Containment	Type 3	Type 3c	Type 3c	
Cooling	Tower (Natural), Lake Harris	Lake Norman	Lake Norman	
NSSS Supplier	Westinghouse	Westinghouse	Westinghouse	
Turbine Mfg.	Westinghouse	Westinghouse	Westinghouse	
Engineer	Ebasco	Utility	Utility	
Constructor	Daniel	Utility	Utility	
Cask Model		TN-32	TN-32	
Cask Vendor		Transnuclear	Transnuclear	
License Type		General	General	
Announced	04-29-71	11-17-69	11-17-69	
Application Docketed	09-07-71	09-18-70	09-18-70	
Construction Permit	01-27-78	02-23-73	02-23-73	
Operating License	10-24-86	01-23-81	03-03-83	
Initial Criticality	01-03-87	08-08-81	05-08-83	
Commercial Operation	05-02-87	12-01-81	03-01-84	
Original License Exp.	10-24-26	06-12-21	03-03-23	
Renewal Application	11-16-06	06-14-01	06-14-01	
Renewal Approved	12-17-08	12-05-03	12-05-03	
Renewal License Exp.	12-24-46	06-12-41	03-03-43	
Notes:				

Operator		Duke Energy			
Owner(s)	Duke Energy Carolinas		Duke Energy Progress		
Nuclear Unit	Oconee 1	Oconee 2	Oconee 3	Robinson 2	
Web Address	duke-energy.com	duke-energy.com	duke-energy.com	duke-energy.com	
NRC Docket No.	50-269	50-270	50-287	50-261	
Location	Seneca, SC	Seneca, SC	Seneca, SC	Hartsville, SC	
Type	PWR	PWR	PWR	PWR	
Orig. Licensed MWt	2568	2568	2568	2200	
Up rated MWt				2339 (S, MUR)	
Design Capacity MWe	887	887	887	700	
Containment	Type 3b	Type 3b	Type 3b	Type 3a	
Cooling	Lake Keowee	Lake Keowee	Lake Keowee	Lake Robinson	
NSSS Supplier	B&W	B&W	B&W	Westinghouse	
Turbine Mfg.	GE	GE	GE	Westinghouse	
Engineer	Utility	Utility	Utility	Ebasco	
Constructor	Utility	Utility	Utility	Ebasco	
Cask Model	NUHOMS-24P	NUHOMS-24P	NUHOMS-24P	NUHOMS-7P/24P	
Cask Vendor	Transnuclear	Transnuclear	Transnuclear	Transnuclear	
License Type	Site-Specific/General	Site-Specific/General	Site-Specific/General	Site-Specific/General	
Announced	07-08-66	07-08-66	07-08-66	01-19-66	
Application Docketed	12-01-66	12-01-66	12-01-66	07-25-66	
Construction Permit	11-06-67	11-06-67	11-06-67	04-13-67	
Operating License	02-06-73	10-06-73	07-19-74	07-31-70	
Initial Criticality	04-19-73	11-11-73	09-05-74	09-20-70	
Commercial Operation	07-15-73	09-09-74	12-16-74	03-07-71	
Original License Exp.	02-06-13	10-06-13	07-19-14	07-31-10	
Renewal Application	07-07-98	07-07-98	07-07-98	06-17-02	
Renewal Approved	05-23-00	05-23-00	05-23-00	04-19-04	
Renewal License Exp.	02-06-33	10-06-33	07-19-34	07-31-30	
Notes:					

Operator	Energy Northwest	Entergy		
Owner(s)	Energy Northwest <i>USA Member</i>	Entergy Arkansas, Inc.	System Energy Resources 90% South Mississippi Elec. Power Association 10%	
Nuclear Unit	Columbia	Arkansas Nuc One 1	Arkansas Nuc One 2	Grand Gulf 1
Web Address	energy-northwest.com	entergy-nuclear.com	entergy-nuclear.com	entergy-nuclear.com
NRC Docket No.	50-397	50-313	50-368	50-416
Location	Richland, WA	Russellville, AR	Russellville, AR	Port Gibson, MS
Type	BWR/5	PWR	PWR	BWR/6
Orig. Licensed MWt	3323	2568	2815	3833
Up rated MWt	3486 (S)		3026 (E)	3898 (MUR)
Design Capacity MWe	1100	850	912	1250
Containment	Type 4g (Mark II)	Type 3b	Type 3b	Type 5h (Mark III)
Cooling	Towers (Mechanical)	Dardanelle Reservoir	Tower (Natural)	Towers (Natural)
NSSS Supplier	GE	B&W	CE	GE
Turbine Mfg.	Westinghouse	Westinghouse	GE	K-U
Engineer	Burns & Roe	Bechtel	Bechtel	Bechtel
Constructor	Bechtel	Bechtel	Bechtel	Bechtel
Cask Model	HI-STORM 100	VSC-24, HI-STORM 100	VSC-24, HI-STORM 100	HI-STORM 100S
Cask Vendor	Holtec Int'l	BNG/Holtec Int'l	BNG/Holtec Int'l	Holtec Int'l
License Type	General	General	General	General
Announced	03-23-71	04-05-67	05-21-70	01-21-72
Application Docketed	08-19-71	11-29-67	09-17-70	11-17-72
Construction Permit	03-19-73	12-06-68	12-06-72	09-04-74
Operating License	12-20-83	05-21-74	07-18-78	06-18-82
Initial Criticality	01-19-84	08-06-74	12-05-78	08-18-82
Commercial Operation	12-13-84	12-19-74	03-26-80	07-01-85
Original License Exp.	12-20-23	05-20-14	07-17-18	11-01-24
Renewal Application	01-20-10	02-01-00	10-16-03	11-01-11
Renewal Approved	05-22-12	06-12-01	06-30-05	12-01-16
Renewal License Exp.	12-20-43	05-20-34	07-17-38	11-01-44
Notes:				

Operator		Entergy			
Owner(s)	Entergy Nuclear Indian Point 2, LLC	Entergy Nuclear Indian Point 3, LLC	Entergy Nuclear Palisades, LLC	Entergy Nuclear Generation Co.	
Nuclear Unit	Indian Point 2	Indian Point 3	Palisades	Pilgrim	
Web Address	entergy-nuclear.com	entergy-nuclear.com	entergy-nuclear.com	entergy-nuclear.com	
NRC Docket No.	50-247	50-286	50-255	50-293	
Location	Buchanan, NY	Buchanan, NY	Covert, MI	Plymouth, MA	
Type	PWR	PWR	PWR	BWR/3	
Orig. Licensed MWt	2758	3025	2530	1998	
Up rated MWt	3216 (S)	3216 (S)	2565.4 (MUR)	2028 (S)	
Design Capacity MWe	873	965	805	655	
Containment	Type 3	Type 3	Type 3b	Type 4g (Mark I)	
Cooling	Hudson River	Hudson River	Towers (Mechanical)	Cape Cod Bay	
NSSS Supplier	Westinghouse	Westinghouse	CE	GE	
Turbine Mfg.	Westinghouse	Westinghouse	Westinghouse	GE	
Engineer	UE&C	UE&C	Bechtel	Bechtel	
Constructor	WEDCO	WEDCO	Bechtel	Bechtel	
Cask Model	HI-STORM 100	HI-STORM 100	VSC-24/NUHOMS-32PT	HI-STORM 100	
Cask Vendor	Holtec Int'l	Holtec Int'l	BNG/Transnuclear	Holtec Int'l	
License Type	General	General	General	General	
Announced	11-23-65	04-26-67	01-28-66	08-07-65	
Application Docketed	12-06-65	04-26-67	06-03-66	06-30-67	
Construction Permit	10-14-66	08-13-69	03-14-67	08-26-68	
Operating License	10-19-71	12-12-75	03-24-71	06-08-72	
Initial Criticality	05-22-73	04-06-76	05-24-71	06-16-72	
Commercial Operation	08-01-74	08-30-76	12-31-71	12-01-72	
Original License Exp.	09-28-13	12-12-15	03-24-11	06-08-12	
Renewal Application	04-30-07	04-30-07	03-31-05	01-27-06	
Renewal Approved			01-17-07	05-29-12	
Renewal License Exp.			03-24-31	06-08-32	
Notes:	Although license has expired, can continue to operate while NRC reviews application		Will permanently shutdown end of 2018	Will permanently shutdown 05-31-19	

Operator		Entergy		Exelon Generation Co., LLC	
Owner(s)	Entergy Gulf States Louisiana, LLC	Entergy Louisiana, LLC			Exelon Corp.
Nuclear Unit	River Bend	Waterford 3	Braidwood 1	Braidwood 2	
Web Address	entergy-nuclear.com	entergy-nuclear.com	exeloncorp.com	exeloncorp.com	
NRC Docket No.	50-458	50-382	50-456	50-457	
Location	St. Francisville, LA	Taft, LA	Braidwood, IL	Braidwood, IL	
Type	BWR/6	PWR	PWR	PWR	
Orig. Licensed MWt	2894	3390	3411	3411	
Up rated MWt	3091 (S, MUR)	3716 (MUR, E)	3645 (MUR)	3645 (MUR)	
Design Capacity MWe	966	1104	1120	1120	
Containment	Type 5h (Mark III)	Type 2e	Type 3b	Type 3b	
Cooling	Towers (Mechanical)	Mississippi River	Braidwood Lake	Braidwood Lake	
NSSS Supplier	GE	CE	Westinghouse	Westinghouse	
Turbine Mfg.	GE	Westinghouse	Westinghouse	Westinghouse	
Engineer	S&W	Ebasco	S&L	S&L	
Constructor	S&W	Ebasco	Utility	Utility	
Cask Model	HI-STORM 100S	HI-STORM 100	HI-STORM 100	HI-STORM 100	
Cask Vendor	Holtec Int'l	Holtec Int'l	Holtec Int'l	Holtec Int'l	
License Type	General	General	General	General	
Announced	12-71	09-24-70	09-28-72	09-28-72	
Application Docketed	09-27-73	12-19-70	09-20-73	09-20-73	
Construction Permit	03-25-77	11-14-74	12-31-75	12-31-75	
Operating License	08-29-85	12-18-84	10-17-86	12-18-87	
Initial Criticality	10-31-85	03-04-85	05-29-87	03-08-88	
Commercial Operation	06-16-86	09-24-85	07-29-88	10-17-88	
Original License Exp.	08-29-25	12-18-24	10-17-26	12-18-27	
Renewal Application	05-25-17	03-30-16	05-01-13	05-01-13	
Renewal Approved			01-27-16	01-27-16	
Renewal License Exp.			10-17-46	12-18-47	
Notes:					

Operator		Exelon Generation Co., LLC			
Owner(s)	Exelon Corp.		Calvert Cliffs Nuclear Power Plant, LLC		
Nuclear Unit	Byron 1	Byron 2	Calvert Cliffs 1	Calvert Cliffs 2	
Web Address	exeloncorp.com	exeloncorp.com	exeloncorp.com	exeloncorp.com	
NRC Docket No.	50-454	50-455	50-317	50-318	
Location	Byron, IL	Byron, IL	Lusby, MD	Lusby, MD	
Type	PWR	PWR	PWR	PWR	
Orig. Licensed MWt	3411	3411	2560	2560	
Up rated MWt	3645 (MUR)	3645 (MUR)	2737 (MUR)	2737 (MUR)	
Design Capacity MWe	1120	1120	845	845	
Containment	Type 3b	Type 3b	Type 3b	Type 3b	
Cooling	Towers (Natural)	Towers (Natural)	Chesapeake Bay	Chesapeake Bay	
NSSS Supplier	Westinghouse	Westinghouse	CE	CE	
Turbine Mfg.	Westinghouse	Westinghouse	GE	Westinghouse	
Engineer	S&L	S&L	Bechtel	Bechtel	
Constructor	Utility	Utility	Bechtel	Bechtel	
Cask Model	HI-STORM 100	HI-STORM 100	NUHOMS-24P/32P	NUHOMS-24P/32P	
Cask Vendor	Holtec Int'l	Holtec Int'l	Transnuclear	Transnuclear	
License Type	General	General	Site-Specific	Site-Specific	
Announced	04-09-71	04-09-71	05-29-67	05-29-67	
Application Docketed	09-20-73	09-20-73	01-25-68	01-25-68	
Construction Permit	12-31-75	12-31-75	07-07-69	07-07-69	
Operating License	10-31-84	11-06-86	07-31-74	08-13-76	
Initial Criticality	02-02-85	01-09-87	10-07-74	11-30-76	
Commercial Operation	09-16-85	08-02-87	05-08-75	04-01-77	
Original License Exp.	10-31-24	11-06-26	07-31-14	08-13-16	
Renewal Application	05-01-13	05-01-13	04-10-98	04-10-98	
Renewal Approved	11-19-15	11-19-15	03-23-00	03-23-00	
Renewal License Exp.	10-31-44	11-06-46	07-31-34	08-13-36	
Notes:	Calvert Cliffs Nuclear Power Plant, LLC, R.E. Ginna Nuclear Power Plant, LLC, and Nine Mile Point Nuclear Station, LLC are subsidiaries of Constellation Energy Nuclear Group, LLC (CENG SM). CENG SM is a joint venture of subsidiaries of Exelon Corporation and Electricité de France S.A.				

Operator		Exelon Generation Co., LLC			
Owner(s)	Exelon Corp.				
Nuclear Unit	Clinton	Dresden 2	Dresden 3	FitzPatrick	
Web Address	exeloncorp.com	exeloncorp.com	exeloncorp.com	exeloncorp.com	
NRC Docket No.	50-461	50-237	50-249	50-333	
Location	Clinton, IL	Morris, IL	Morris, IL	Scriba, NY	
Type	BWR/6	BWR/3	BWR/3	BWR/4	
Orig. Licensed MWt	2894	2527	2527	2436	
Up rated MWt	3473 (E)	2957 (E)	2957 (E)	2536 (S)	
Design Capacity MWe	950	794	794	838	
Containment	Type 5h (Mark III)	Type 4g (Mark I)	Type 4g (Mark I)	Type 4g (Mark I)	
Cooling	Clinton Lake	Cooling Lake	Cooling Lake	Lake Ontario	
NSSS Supplier	GE	GE	GE	GE	
Turbine Mfg.	GE	GE	GE	GE	
Engineer	S&L	S&L	S&L	S&W	
Constructor	Baldwin	UE&C	UE&C	S&W	
Cask Model		HI-STAR/HI-STORM 100	HI-STAR/HI-STORM 100	HI-STORM 100	
Cask Vendor		Holtec Int'l	Holtec Int'l	Holtec Int'l	
License Type		General	General	General	
Announced	02-10-72	02-08-65	01-21-66	08-09-68	
Application Docketed	10-30-73	04-15-65	02-10-66	12-31-68	
Construction Permit	02-24-76	01-10-66	10-14-66	05-20-70	
Operating License	09-29-86	12-22-69	01-12-71	10-17-74	
Initial Criticality	02-27-87	01-07-70	01-31-71	11-17-74	
Commercial Operation	11-24-87	06-09-70	11-16-71	07-28-75	
Original License Exp.	09-29-26	12-22-09	01-12-11	10-17-14	
Renewal Application		01-03-03	01-03-03	08-01-06	
Renewal Approved		10-28-04	10-28-04	09-08-08	
Renewal License Exp.		12-22-29	01-12-31	10-17-34	
Notes:	Purchased from Entergy 04-01-17				

Operator				
Exelon Generation Co., LLC				
Owner(s)	R. E. Ginna Nuclear Power Plant, LLC	Exelon Corp.	Exelon Corp.	Exelon Corp.
Nuclear Unit	Ginna	LaSalle 1	LaSalle 2	Limerick 1
Web Address	exeloncorp.com	exeloncorp.com	exeloncorp.com	exeloncorp.com
NRC Docket No.	50-244	50-373	50-374	50-352
Location	Ontario, NY	Marseilles, IL	Marseilles, IL	Pottstown, PA
Type	PWR	BWR/5	BWR/5	BWR/4
Orig. Licensed MWt	1300	3323	3323	3293
Up rated MWt	1775 (E)	3546 (MUR)	3546 (MUR)	3546 (MUR)
Design Capacity MWe	470	1078	1078	1055
Containment	Type 3a	Type 5g (Mark II)	Type 5g (Mark II)	Type 5g (Mark II)
Cooling	Lake Ontario	Cooling Lake	Cooling Lake	Tower (Natural)
NSSS Supplier	Westinghouse	GE	GE	GE
Turbine Mfg.	Westinghouse	GE	GE	GE
Engineer	Gilbert	S&L	S&L	Bechtel
Constructor	Bechtel	Utility	Utility	Bechtel
Cask Model	NUHOMS-32PT	HI-STORM 100	HI-STORM 100	NUHOMS-61BT
Cask Vendor	Transnuclear	Holtec Int'l	Holtec Int'l	Transnuclear
License Type	General	General	General	General
Announced	08-65	05-27-70	05-27-70	10-01-69
Application Docketed	11-01-65	11-03-70	11-03-70	02-27-70
Construction Permit	04-25-66	09-10-73	09-10-73	06-19-74
Operating License	09-19-69	04-17-82	12-16-83	10-26-84
Initial Criticality	11-08-69	06-21-82	03-10-84	12-22-84
Commercial Operation	07-01-70	01-01-84	10-19-84	02-01-86
Original License Exp.	09-18-09	04-17-22	12-16-23	10-26-24
Renewal Application	08-01-02	12-09-14	12-09-14	06-22-11
Renewal Approved	05-19-04	10-19-16	10-19-16	10-20-14
Renewal License Exp.	09-18-29	04-17-42	12-16-43	10-26-44
Notes:	See note on page 25			

Operating Commercial Nuclear Power Stations

3 REGION III

ILLINOIS

Braidwood 1&2
Byron 1&2
Clinton
Dresden 2&3
LaSalle 1&2
Quad Cities 1&2

IOWA

Duane Arnold

MICHIGAN

Cook 1&2
Fermi 2
Palisades

MINNESOTA

Monticello
Prairie Island 1&2

MISSOURI

Callaway 1

OHIO

Davis-Besse
Perry 1

WISCONSIN

Point Beach 1&2

4 REGION IV

ARIZONA

Palo Verde 1,2&3

ARKANSAS

Arkansas Nuclear 1&2

CALIFORNIA

Diablo Canyon 1&2

KANSAS

Wolf Creek 1

LOUISIANA

River Bend 1
Waterford 3

MISSISSIPPI

Grand Gulf 1

NEBRASKA

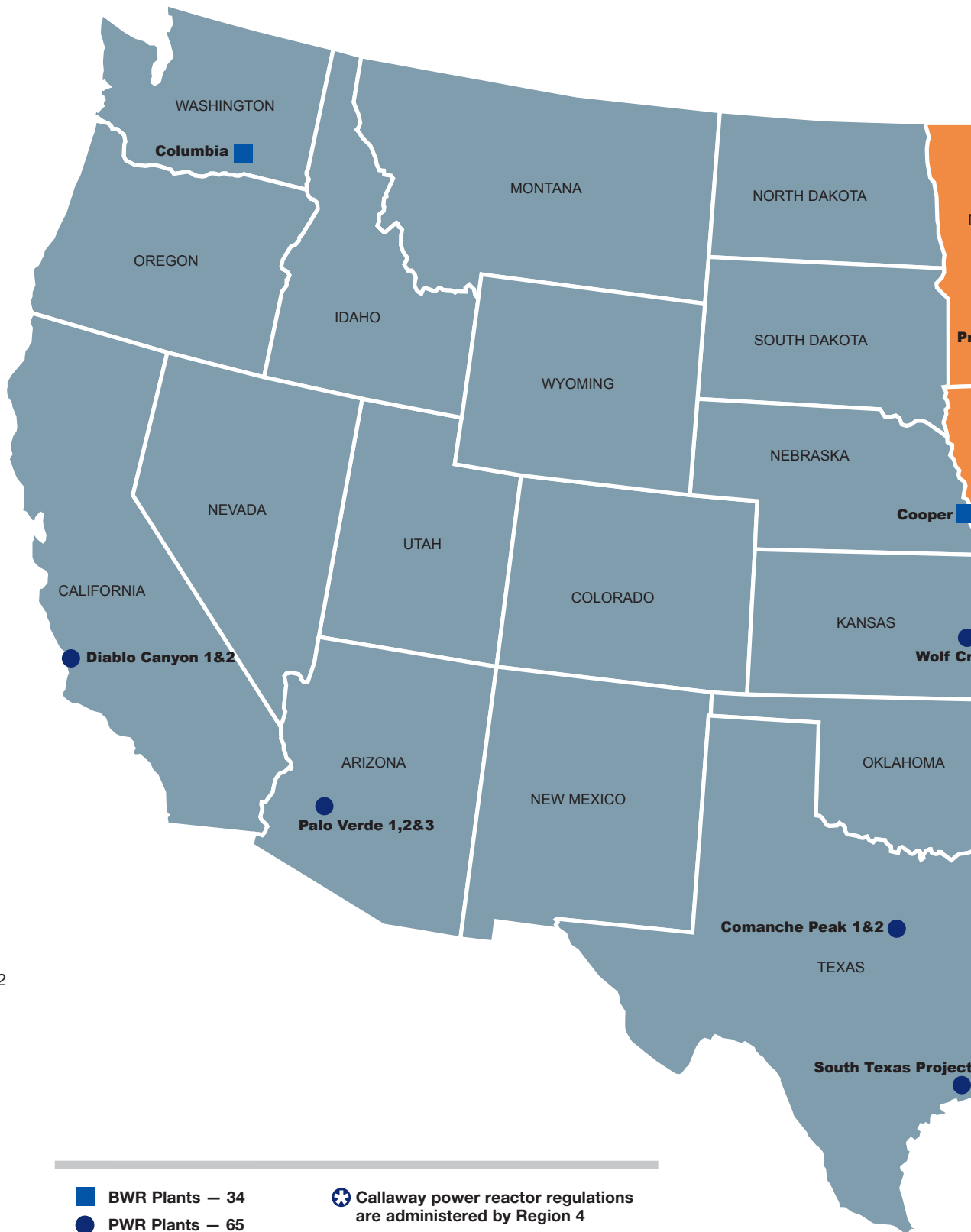
Cooper

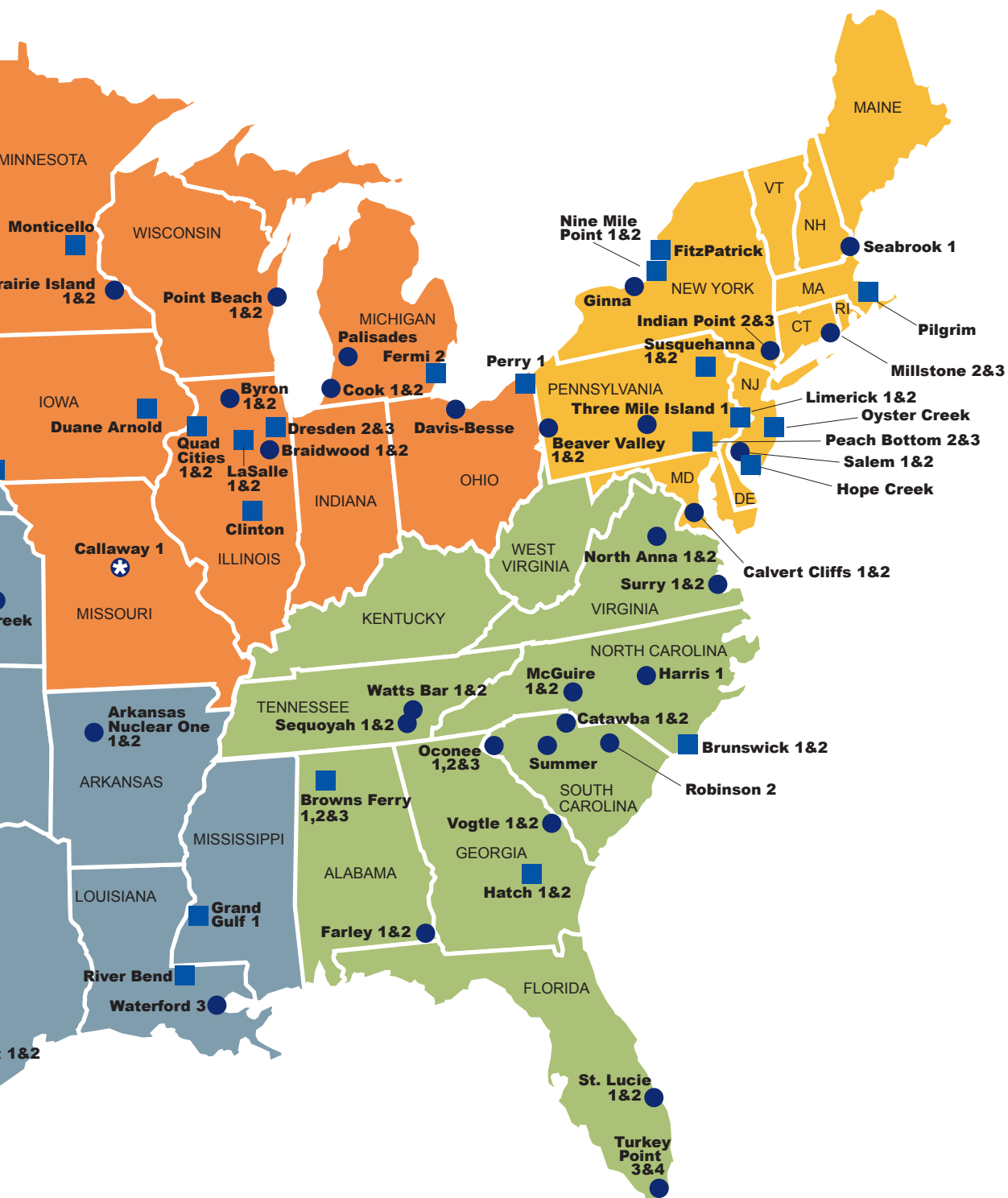
TEXAS

Comanche Peak 1&2
South Texas Project 1&2

WASHINGTON

Columbia





1 REGION I

- CONNECTICUT**
Millstone 2&3
- MARYLAND**
Calvert Cliffs 1&2
- MASSACHUSETTS**
Pilgrim
- NEW HAMPSHIRE**
Seabrook 1
- NEW JERSEY**
Hope Creek
Oyster Creek
Salem 1&2
- NEW YORK**
FitzPatrick
Ginna
Indian Point 2&3
Nine Mile Point 1&2
- PENNSYLVANIA**
Beaver Valley 1&2
Limerick 1&2
Peach Bottom 2&3
Salem 1&2
Three Mile Island 1

2 REGION II

- ALABAMA**
Browns Ferry 1,2&3
Farley 1&2
- FLORIDA**
St. Lucie 1&2
Turkey Point 3&4
- GEORGIA**
Hatch 1&2
Vogtle 1&2
- NORTH CAROLINA**
Brunswick 1&2
McGuire 1&2
Harris 1
- SOUTH CAROLINA**
Catawba 1&2
Oconee 1,2&3
Robinson 2
Summer
- TENNESSEE**
Sequoyah 1&2
Watts Bar 1&2
- VIRGINIA**
North Anna 1&2
Surry 1&2

Operator Exelon Generation Co., LLC				
Owner(s)	Exelon Corp.	Nine Mile Point Nuclear Station, LLC	Nine Mile Point Nuclear Station, LLC 82% LIPA 18%	Exelon Corp.
Nuclear Unit	Limerick 2	Nine Mile Point 1	Nine Mile Point 2	Oyster Creek
Web Address	exeloncorp.com	exeloncorp.com	exeloncorp.com	exeloncorp.com
NRC Docket No.	50-353	50-220	50-410	50-219
Location	Pottstown, PA	Lycoming, NY	Lycoming, NY	Forked River, NJ
Type	BWR/4	BWR/2	BWR/5	BWR/2
Orig. Licensed MWt	3293	1850	3467	1930
Up rated MWt	3546 (MUR)		3988	
Design Capacity MWe	1055	620	1369	650
Containment	Type 5g (Mark II)	Type 4g (Mark I)	Type 5g (Mark II)	Type 4g (Mark I)
Cooling	Tower (Natural)	Lake Ontario	Lake Ontario	Barneгат Bay
NSSS Supplier	GE	GE	GE	GE
Turbine Mfg.	GE	GE	GE	GE
Engineer	Bechtel	Utility	S&W	Burns & Roe
Constructor	Bechtel	S&W	S&W	Burns & Roe
Cask Model	NUHOMS-61BT	NUHOMS-61BT	NUHOMS-61BT	NUHOMS-61BT
Cask Vendor	Transnuclear	Transnuclear	Transnuclear	Transnuclear
License Type	General	General	General	General
Announced	10-01-69	07-02-63	10-01-71	12-12-63
Application Docketed	02-27-70	04-01-64	06-15-72	03-30-64
Construction Permit	06-19-74	04-12-65	06-24-74	12-15-64
Operating License	06-22-89	08-22-69	10-31-86	04-09-69
Initial Criticality	08-12-89	09-05-69	05-23-87	05-03-69
Commercial Operation	01-08-90	12-01-69	03-11-88	12-01-69
Original License Exp.	06-22-29	08-22-09	10-31-26	04-09-09
Renewal Application	06-22-11	05-27-04	05-27-04	07-22-05
Renewal Approved	10-20-14	10-31-06	10-31-06	04-08-09
Renewal License Exp.	06-22-49	08-22-29	10-31-46	04-09-29
Notes:	See note on page 25			Will permanently shutdown in October 2018

Operator		Exelon Generation Co., LLC			
Owner(s)	Exelon Corp.	50%	Exelon Corp.	75%	
	PSEG Power	50%	MidAmerican Energy Co.	25%	
Nuclear Unit	Peach Bottom 2	Peach Bottom 3	Quad Cities 1	Quad Cities 2	
Web Address	exeloncorp.com	exeloncorp.com	exeloncorp.com	exeloncorp.com	
NRC Docket No.	50-277	50-278	50-254	50-265	
Location	Delta, PA	Delta, PA	Cordova, IL	Cordova, IL	
Type	BWR/4	BWR/4	BWR/3	BWR/3	
Orig. Licensed MWt	3293	3293	2511	2511	
Up rated MWt	3514 (MUR)	3514 (MUR)	2957 (E)	2957 (E)	
Design Capacity MWe	1355	1355	789	789	
Containment	Type 4g (Mark I)	Type 4g (Mark I)	Type 4g (Mark I)	Type 4g (Mark I)	
Cooling	Susquehanna River; Towers (Mechanical)	Susquehanna River; Towers (Mechanical)	Mississippi River	Mississippi River	
NSSS Supplier	GE	GE	GE	GE	
Turbine Mfg.	GE	GE	GE	GE	
Engineer	Bechtel	Bechtel	S&L	S&L	
Constructor	Bechtel	Bechtel	UE&C	UE&C	
Cask Model	TN-68	TN-68	HI-STORM 100S	HI-STORM 100S	
Cask Vendor	Transnuclear	Transnuclear	Holtec Int'l	Holtec Int'l	
License Type	General	General	General	General	
Announced	08-22-66	08-22-66	04-01-66	07-18-66	
Application Docketed	02-13-67	02-13-67	05-31-66	08-16-66	
Construction Permit	01-31-68	01-31-68	02-15-67	02-15-67	
Operating License	08-08-73	07-02-74	10-01-71	03-31-72	
Initial Criticality	09-16-73	08-07-74	10-18-71	04-26-72	
Commercial Operation	07-05-74	12-23-74	02-18-73	03-10-73	
Original License Exp.	08-08-13	07-02-14	12-14-12	12-14-12	
Renewal Application	07-02-01	07-02-01	01-03-03	01-03-03	
Renewal Approved	05-07-03	05-07-03	10-28-04	10-28-04	
Renewal License Exp.	08-08-33	07-02-34	12-14-32	12-14-32	
Notes:					

Operator	Exelon Generation Co., LLC	FirstEnergy Nuclear Operating Co.		
Owner(s)	Exelon Corp.	FirstEnergy	FirstEnergy Ohio Edison Co. 60% Toledo Edison Co. 21.7% 18.3%	FirstEnergy
Nuclear Unit	Three Mile Island 1	Beaver Valley 1	Beaver Valley 2	Davis-Besse
Web Address	exeloncorp.com	firstenergycorp.com	firstenergycorp.com	firstenergycorp.com
NRC Docket No.	50-289	50-334	50-412	50-346
Location	Middletown, PA	Shippingport, PA	Shippingport, PA	Oak Harbor, OH
Type	PWR	PWR	PWR	PWR
Orig. Licensed MWt	2535	2652	2652	2772
Up rated MWt	2568 (S)	2900 (MUR, E)	2900 (MUR, E)	2817 (MUR)
Design Capacity MWe	819	835	836	906
Containment	Type 3b	Type 3d	Type 3d	Type 2e
Cooling	Towers (Natural & Mechanical)	Towers (Natural)	Towers (Natural)	Tower (Natural)
NSSS Supplier	B&W	Westinghouse	Westinghouse	B&W
Turbine Mfg.	GE	Westinghouse	Westinghouse	GE
Engineer	Gilbert	S&W	S&W	Bechtel
Constructor	UE&C	S&W	S&W	Bechtel
Cask Model		NUHOMS-37PTH	NUHOMS-37PTH	NUHOMS-24P
Cask Vendor		Transnuclear	Transnuclear	Transnuclear
License Type		General	General	General
Announced	11-20-66	10-03-67	09-24-71	11-68
Application Docketed	05-03-67	01-05-69	10-20-72	08-01-69
Construction Permit	05-18-68	06-26-70	05-03-74	03-24-71
Operating License	04-19-74	01-30-76	05-28-87	04-22-77
Initial Criticality	06-05-74	05-10-76	08-04-87	08-12-77
Commercial Operation	09-02-74	10-01-76	11-17-87	07-31-78
Original License Exp.	04-19-14	01-29-16	05-27-27	04-22-17
Renewal Application	01-08-08	08-28-07	08-28-07	08-30-10
Renewal Approved	10-22-09	11-05-09	11-05-09	12-08-15
Renewal License Exp.	04-19-34	01-29-36	05-27-47	04-22-37
Notes:	Plans to shutdown in 2019	Plans to shutdown in 2021		Plans to shutdown in 2020

Operator	FirstEnergy Nuclear Operating Co.	Florida Power & Light Co.		
Owner(s)	First Energy 87.40% Ohio Edison Co. 12.60%	Florida Power & Light Co.	Florida Power & Light Co. 85.10% Florida Municipal Power Agency 8.80% Orlando Utilities Comm 6.10%	Florida Power & Light Co.
Nuclear Unit	Perry 1	St. Lucie 1	St. Lucie 2	Turkey Point 3
Web Address	firstenergycorp.com	fpl.com	fpl.com	fpl.com
NRC Docket No.	50-440	50-335	50-389	50-250
Location	Perry, OH	Hutchinson Island, FL	Hutchinson Island, FL	Florida City, FL
Type	BWR/6	PWR	PWR	PWR
Orig. Licensed MWt	3579	2560	2560	2200
Up rated MWt	3758	2700 (S)	2700 (S)	2300 (S)
Design Capacity MWe	1205	830	830	693
Containment	Type 5h (Mark III)	Type 2e	Type 2e	Type 3b
Cooling	Tower (Natural)	Atlantic Ocean	Atlantic Ocean	Canals
NSSS Supplier	GE	CE	CE	Westinghouse
Turbine Mfg.	GE	Westinghouse	Westinghouse	Westinghouse
Engineer	Gilbert	Ebasco	Ebasco	Bechtel
Constructor	Kaiser	Ebasco	Ebasco	Bechtel
Cask Model	HI-STORM	NUHOMS-37PTH	NUHOMS-37PTH	NUHOMS-37PTH
Cask Vendor	Holtec Int'l	Transnuclear	Transnuclear	Transnuclear
License Type	General	General	General	General
Announced	10-13-71	11-20-67	05-01-71	11-15-65
Application Docketed	06-25-73	01-28-69	05-15-73	03-28-66
Construction Permit	05-03-77	07-01-70	05-02-77	04-27-67
Operating License	03-18-86	03-01-76	04-06-83	07-19-72
Initial Criticality	06-06-86	04-22-76	06-02-83	10-20-72
Commercial Operation	11-18-87	12-21-76	08-08-83	12-14-72
Original License Exp.	03-18-26	03-01-16	04-06-23	07-19-12
Renewal Application		11-30-01	11-30-01	09-11-00
Renewal Approved		10-02-03	10-02-03	07-17-02
Renewal License Exp.		03-01-36	04-06-43	07-19-32
Notes:	Plans to shutdown in 2021			

Operator	Florida Power & Light Co.	Luminant Generation Co.	
Owner(s)	Florida Power & Light Co.	Luminant Generation Co.	
		<i>USA Member</i>	<i>USA Member</i>
Nuclear Unit	Turkey Point 4	Comanche Peak 1	Comanche Peak 2
Web Address	fpl.com	luminant.com	luminant.com
NRC Docket No.	50-251	50-445	50-446
Location	Florida City, FL	Glen Rose, TX	Glen Rose, TX
Type	PWR	PWR	PWR
Orig. Licensed MWt	2200	3411	3411
Up rated MWt	2300 (S)	3612 (MUR)	3458 (MUR)
Design Capacity MWe	693	1150	1150
Containment	Type 3b	Type 3	Type 3
Cooling	Canals	Squaw Reservoir	Squaw Reservoir
NSSS Supplier	Westinghouse	Westinghouse	Westinghouse
Turbine Mfg.	Westinghouse	A-C	A-C
Engineer	Bechtel	G&H	G&H
Constructor	Bechtel	Brown & Root	Brown & Root
Cask Model	NUHOMS-37PTH	HI-STORM 100	HI-STORM 100
Cask Vendor	Transnuclear	Holtec Int'l	Holtec Int'l
License Type	General	General	General
Announced	11-15-65	07-72	07-72
Application Docketed	03-28-66	07-20-73	07-20-73
Construction Permit	04-27-67	12-19-74	12-19-74
Operating License	04-10-73	02-08-90	02-02-93
Initial Criticality	06-11-73	04-30-90	03-24-93
Commercial Operation	09-07-73	08-13-90	08-03-93
Original License Exp.	04-10-13	02-08-30	02-02-33
Renewal Application	09-11-00		
Renewal Approved	07-17-02		
Renewal License Exp.	04-10-33		
Notes:			

Operator	Nebraska Public Power District	NextEra Energy Duane Arnold	NextEra Energy Point Beach	
Owner(s)	Nebraska Public Power District <i>USA Member</i>	NextEra Energy Resources 70% Central Iowa Power Coop. 20% Corn Belt Power Coop. 10%	NextEra Energy Point Beach	
Nuclear Unit	Cooper*	Duane Arnold	Point Beach 1	Point Beach 2
Web Address	nppd.com	nexteraenergy.com	nexteraenergy.com	nexteraenergy.com
NRC Docket No.	50-298	50-331	50-266	50-301
Location	Brownville, NE	Palo, IA	Two Rivers, WI	Two Rivers, WI
Type	BWR/4	BWR/4	PWR	PWR
Orig. Licensed MWt	2381	1658	1518	1518
Up rated MWt	2419	1912 (S, E)		
Design Capacity MWe	778	538	497	497
Containment	Type 4g (Mark I)	Type 4g (Mark I)	Type 3b	Type 3b
Cooling	Missouri River	Towers (Mechanical)	Lake Michigan	Lake Michigan
NSSS Supplier	GE	GE	Westinghouse	Westinghouse
Turbine Mfg.	Westinghouse	GE	Westinghouse	Westinghouse
Engineer	Burns & Roe	Bechtel	Bechtel	Bechtel
Constructor	Burns & Roe	Bechtel	Bechtel	Bechtel
Cask Model	NUHOMS-61BT	NUHOMS-61BT	VSC-24/NUHOMS-32PT	VSC-24/NUHOMS-32PT
Cask Vendor	Transnuclear	Transnuclear	BNG/Transnuclear	BNG/Transnuclear
License Type	General	General	General	General
Announced	08-27-66	03-04-68	02-03-66	02-27-67
Application Docketed	07-27-67	11-04-68	08-31-66	08-03-67
Construction Permit	06-04-68	06-22-70	07-19-67	07-25-68
Operating License	01-18-74	02-22-74	10-05-70	11-16-71
Initial Criticality	02-21-74	03-23-74	11-02-70	05-30-72
Commercial Operation	07-01-74	02-01-75	12-21-70	10-01-72
Original License Exp.	01-18-14	02-02-14	10-05-10	03-08-13
Renewal Application	09-30-08	10-01-08	02-26-04	02-26-04
Renewal Approved	11-29-10	12-16-10	12-22-05	12-22-05
Renewal License Exp.	01-18-34	02-21-34	10-05-30	03-08-33
Notes:	* Entergy Nuclear Nebraska provides support services			

Operator	NextEra Energy Seabrook	Northern States Power Co.		
Owner(s)	NextEra Energy Seabrook 88.23%	Xcel Energy	Xcel Energy	
	Mass. Municipal Wholesale Elec. Co. 11.59%			
	Others 0.18%	<i>USA Member</i>	<i>USA Member</i>	<i>USA Member</i>
Nuclear Unit	Seabrook 1	Monticello	Prairie Island 1	Prairie Island 2
Web Address	nexteraenergy.com	xcelenergy.com	xcelenergy.com	xcelenergy.com
NRC Docket No.	50-443	50-263	50-282	50-306
Location	Seabrook, NH	Monticello, MN	Red Wing, MN	Red Wing, MN
Type	PWR	BWR/3	PWR	PWR
Orig. Licensed MWt	3411	1670	1650	1650
Up rated MWt	3648 (S, MUR)	1755 (E)		
Design Capacity MWe	1149	545	530	530
Containment	Type 3g	Type 4g (Mark I)	Type 2e	Type 2e
Cooling	Atlantic Ocean	Towers (Mechanical)	Towers (Mechanical)	Towers (Mechanical)
NSSS Supplier	Westinghouse	GE	Westinghouse	Westinghouse
Turbine Mfg.	GE	GE	Westinghouse	Westinghouse
Engineer	UE&C	Bechtel	FPI	FPI
Constructor	UE&C	Bechtel	Utility	Utility
Cask Model	NUHOMS-HD-3PTH	NUHOMS61BT/61BTH	TN-40/TN-40HT	TN-40/TN-40HT
Cask Vendor	Transnuclear	Transnuclear	Transnuclear	Transnuclear
License Type	General	General	Site-Specific	Site-Specific
Announced	02-01-72	04-08-66	02-03-67	06-27-67
Application Docketed	07-09-73	08-08-66	04-07-67	08-30-67
Construction Permit	07-07-76	06-19-67	06-25-68	06-25-68
Operating License	10-17-86	09-08-70	08-09-73	10-29-74
Initial Criticality	06-13-89	12-10-70	12-01-73	12-17-74
Commercial Operation	08-17-90	06-30-71	12-16-73	12-21-74
Original License Exp.	03-15-30	09-08-10	08-09-13	10-29-14
Renewal Application	06-01-10	03-24-05	04-15-08	04-15-08
Renewal Approved		11-08-06	06-27-11	06-27-11
Renewal License Exp.		09-08-30	08-09-33	10-29-34
Notes:				

Operator	Pacific Gas & Electric Co.		PSEG Nuclear, LLC
Owner(s)	PG&E Corp. <i>STARS Member</i> <i>STARS Member</i>		PSEG Power
Nuclear Unit	Diablo Canyon 1	Diablo Canyon 2	Hope Creek
Web Address	pge.com	pge.com	pseg.com
NRC Docket No.	50-275	50-323	50-354
Location	Avila Beach, CA	Avila Beach, CA	Lower Alloways, NJ
Type	PWR	PWR	BWR/4
Orig. Licensed MWt	3338	3411	3293
Up rated MWt	3411 (S)		3840 (MUR)
Design Capacity MWe	1084	1106	1067
Containment	Type 3	Type 3	Type 4g (Mark I)
Cooling	Pacific Ocean	Pacific Ocean	Towers (Natural)
NSSS Supplier	Westinghouse	Westinghouse	GE
Turbine Mfg.	Westinghouse	Westinghouse	GE
Engineer	Utility	Utility	Bechtel
Constructor	Utility	Utility	Bechtel
Cask Model	HI-STORM 100	HI-STORM 100	HI-STORM 100
Cask Vendor	Holtec Int'l	Holtec Int'l	Holtec Int'l
License Type	Site-Specific	Site-Specific	General
Announced	11-20-66	02-12-68	08-11-69
Application Docketed	01-18-67	07-01-68	02-27-70
Construction Permit	04-23-68	12-09-70	11-04-74
Operating License	09-22-81	04-26-85	04-11-86
Initial Criticality	04-29-84	08-19-85	06-28-86
Commercial Operation	05-07-85	03-13-86	12-20-86
Original License Exp.	11-02-24*	08-26-25*	04-11-26
Renewal Application	11-24-09	11-24-09	08-18-09
Renewal Approved			07-20-11
Renewal License Exp.			04-11-46
Notes:	* License renewal application withdrawn; plant announced shutdown 2025		

Operator	PSEG Nuclear, LLC		South Carolina Electric & Gas Co.
Owner(s)	PSEG Power Exelon Corp.	57.41% 42.59%	South Carolina Electric & Gas 66.70% Santee Cooper 33.30%
Nuclear Unit	Salem 1	Salem 2	Summer
Web Address	pseg.com	pseg.com	scana.com
NRC Docket No.	50-272	50-311	50-395
Location	Lower Alloways, NJ	Lower Alloways, NJ	Jenkinsville, SC
Type	PWR	PWR	PWR
Orig. Licensed MWt	3411	3411	2775
Up rated MWt	3459 (S, MUR)	3459 (S, MUR)	2900 (S)
Design Capacity MWe	1090	1115	900
Containment	Type 3	Type 3	Type 3b
Cooling	Delaware River	Delaware River	Lake Monticello
NSSS Supplier	Westinghouse	Westinghouse	Westinghouse
Turbine Mfg.	Westinghouse	Westinghouse	GE
Engineer	Utility	Utility	Gilbert
Constructor	UE&C	UE&C	Daniel
Cask Model	HI-STORM 100	HI-STORM 100	HI-STORM FW
Cask Vendor	Holtec Int'l	Holtec Int'l	Holtec Int'l
License Type	General	General	General
Announced	08-15-66	06-01-67	02-12-71
Application Docketed	12-13-66	11-06-67	06-30-71
Construction Permit	09-25-68	09-25-68	03-21-73
Operating License	08-13-76	04-18-80	08-06-82
Initial Criticality	12-11-76	08-08-80	10-22-82
Commercial Operation	06-30-77	10-13-81	01-01-84
Original License Exp.	08-13-16	04-18-20	08-06-22
Renewal Application	08-18-09	08-18-09	08-06-02
Renewal Approved	06-30-11	06-30-11	04-23-04
Renewal License Exp.	08-13-36	04-18-40	08-06-42
Notes:	Dominion plans to purchase in 2018		

Operator		Southern Nuclear Operating Co.			
Owner(s)	Alabama Power	Georgia Power Co.	50.10%		
		Oglethorpe Power Corp.	30.00%		
		Municipal Electric Authority of Georgia	17.70%		
		Dalton Utilities	2.20%		
Nuclear Unit	Farley 1	Farley 2	Hatch 1	Hatch 2	
Web Address	southernco.com	southernco.com	southernco.com	southernco.com	
NRC Docket No.	50-348	50-364	50-321	50-366	
Location	Columbia, AL	Columbia, AL	Baxley, GA	Baxley, GA	
Type	PWR	PWR	BWR/4	BWR/4	
Orig. Licensed MWt	2652	2652	2436	2436	
Up rated MWt	2775 (S)	2775 (S)	2804 (S, E)	2804 (S, E)	
Design Capacity MWe	829	829	777	784	
Containment	Type 3b	Type 3b	Type 4g (Mark I)	Type 4g (Mark I)	
Cooling	Towers (Mechanical)	Towers (Mechanical)	Towers (Mechanical)	Towers (Mechanical)	
NSSS Supplier	Westinghouse	Westinghouse	GE	GE	
Turbine Mfg.	Westinghouse	Westinghouse	GE	GE	
Engineer	SCSI	SCSI	Bechtel	Bechtel	
Constructor	Daniel	Daniel	Utility	Utility	
Cask Model	NUHOMS-32PT	NUHOMS-32PT	HI-STAR/HI-STORM 100	HI-STAR/HI-STORM 100	
Cask Vendor	Transnuclear	Transnuclear	Holtec Int'l	Holtec Int'l	
License Type	General	General	General	General	
Announced	05-13-69	06-30-69	12-19-67	02-27-70	
Application Docketed	10-15-69	10-15-69	05-06-68	09-11-70	
Construction Permit	08-16-72	08-16-72	09-30-69	12-27-72	
Operating License	06-25-77	10-23-80	08-06-74	06-13-78	
Initial Criticality	08-09-77	05-05-81	09-12-74	07-04-78	
Commercial Operation	12-01-77	07-30-81	12-31-74	09-05-79	
Original License Exp.	06-25-17	03-31-21	08-06-14	06-13-18	
Renewal Application	09-15-03	09-15-03	03-01-00	03-01-00	
Renewal Approved	05-12-05	05-12-05	01-07-02	01-07-02	
Renewal License Exp.	06-25-37	03-31-41	08-06-34	06-13-38	
Notes:					

Operator	Southern Nuclear Operating Co.		STP Nuclear Operating Co.			
Owner(s)	Georgia Power Co.	45.70%	NRG Energy	44%		
	Oglethorpe Power Corp.	30.00%			CPS Energy	40%
	Municipal Electric Authority of Georgia	22.70%			Austin Energy	16%
	Dalton Utilities	1.60%				
			<i>USA Member</i>	<i>USA Member</i>		
Nuclear Unit	Vogtle 1	Vogtle 2	South Texas Project 1	South Texas Project 2		
Web Address	southernco.com	southernco.com	stpnoc.com	stpnoc.com		
NRC Docket No.	50-424	50-425	50-498	50-499		
Location	Waynesboro, GA	Waynesboro, GA	Bay City, TX	Bay City, TX		
Type	PWR	PWR	PWR	PWR		
Orig. Licensed MWt	3411	3411	3800	3800		
Up rated MWt	3625 (S)	3625 (S)	3853 (MUR)	3853 (MUR)		
Design Capacity MWe	1122	1101	1250	1250		
Containment	Type 3b	Type 3b	Type 3b	Type 3b		
Cooling	Towers (Natural)	Towers (Natural)	Cooling Pond	Cooling Pond		
NSSS Supplier	Westinghouse	Westinghouse	Westinghouse	Westinghouse		
Turbine Mfg.	GE	GE	Westinghouse	Westinghouse		
Engineer	SCSI & Bechtel	SCSI & Bechtel	Bechtel	Bechtel		
Constructor	Utility	Utility	Ebasco	Ebasco		
Cask Model	HI-STORM 100S	HI-STORM 100S				
Cask Vendor	Holtec Int'l	Holtec Int'l				
License Type	General	General				
Announced	09-08-71	09-08-71	06-06-73	06-06-73		
Application Docketed	02-13-73	02-13-73	07-05-74	07-05-74		
Construction Permit	06-28-74	06-28-74	12-22-75	12-22-75		
Operating License	01-16-87	02-09-89	08-21-87	12-16-88		
Initial Criticality	03-09-87	03-28-89	03-08-88	03-12-89		
Commercial Operation	06-01-87	05-20-89	08-25-88	06-19-89		
Original License Exp.	01-16-27	02-09-29	08-20-27	12-15-28		
Renewal Application	06-29-07	06-29-07	10-28-10	10-28-10		
Renewal Approved	06-03-09	06-03-09	09-28-17	09-28-17		
Renewal License Exp.	01-16-47	02-09-49	08-20-47	12-15-48		
Notes:						

Operator	Susquehanna Nuclear, LLC		Tennessee Valley Authority	
Owner(s)	Susquehanna Nuclear Allegheny Electric Coop.	90% 10%	Tennessee Valley Authority	
	<i>USA Member</i>	<i>USA Member</i>		
Nuclear Unit	Susquehanna 1	Susquehanna 2	Browns Ferry 1	Browns Ferry 2
Web Address	talenenergy.com	talenenergy.com	tva.gov	tva.gov
NRC Docket No.	50-387	50-388	50-259	50-260
Location	Berwick, PA	Berwick, PA	Athens, AL	Athens, AL
Type	BWR/4	BWR/4	BWR/4	BWR/4
Orig. Licensed MWt	3293	3293	3293	3293
Up rated MWt	3952 (S, MUR)	3952 (S, MUR)	3952 (S)	3952 (S)
Design Capacity MWe	1065	1065	1065	1065
Containment	Type 5g (Mark II)	Type 5g (Mark II)	Type 4g (Mark I)	Type 4g (Mark I)
Cooling	Towers (Natural)	Towers (Natural)	Tenn River/Towers	Tenn River/Towers
NSSS Supplier	GE	GE	GE	GE
Turbine Mfg.	GE	GE	GE	GE
Engineer	Bechtel	Bechtel	Utility	Utility
Constructor	Bechtel	Bechtel	Utility	Utility
Cask Model	NUHOMS-52B/61BTH	NUHOMS-52B/61BTH	HI-STORM 100S	HI-STORM 100S
Cask Vendor	Transnuclear	Transnuclear	Holtec Int'l	Holtec Int'l
License Type	General	General	General	General
Announced	05-10-68	05-10-68	06-17-66	06-17-66
Application Docketed	04-01-71	04-01-71	07-13-66	07-13-66
Construction Permit	11-02-73	11-02-73	05-10-67	05-10-67
Operating License	07-17-82	03-23-84	06-26-73	06-28-74
Initial Criticality	09-10-82	05-08-84	08-17-73	07-20-74
Commercial Operation	06-08-83	02-12-85	08-01-74	03-01-75
Original License Exp.	07-17-22	03-23-24	12-20-13	06-28-14
Renewal Application	09-13-06	09-13-06	01-06-04	01-06-04
Renewal Approved	11-24-09	11-24-09	05-04-06	05-04-06
Renewal License Exp.	07-17-42	03-23-44	12-20-33	06-28-34
Notes:				

Operator		Tennessee Valley Authority		
Owner(s)	Tennessee Valley Authority			
Nuclear Unit	Browns Ferry 3	Sequoyah 1	Sequoyah 2	
Web Address	tva.gov	tva.gov	tva.gov	
NRC Docket No.	50-296	50-327	50-328	
Location	Athens, AL	Soddy Daisy, TN	Soddy Daisy, TN	
Type	BWR/4	PWR	PWR	
Orig. Licensed MWt	3293	3411	3411	
Up rated MWt	3952 (S)	3455 (MUR)	3455 (MUR)	
Design Capacity MWe	1065	1148	1148	
Containment	Type 4g (Mark I)	Type 2ce	Type 2ce	
Cooling	Tenn River/Towers	Tenn River/Towers	Tenn River/Towers	
NSSS Supplier	GE	Westinghouse	Westinghouse	
Turbine Mfg.	GE	Westinghouse	Westinghouse	
Engineer	Utility	Utility	Utility	
Constructor	Utility	Utility	Utility	
Cask Model	HI-STORM 100S	HI-STORM 100	HI-STORM 100	
Cask Vendor	Holtec Int'l	Holtec Int'l	Holtec Int'l	
License Type	General	General	General	
Announced	06-22-67	04-18-68	04-18-68	
Application Docketed	07-17-67	10-15-68	10-15-68	
Construction Permit	07-31-68	05-27-70	05-27-70	
Operating License	07-02-76	02-29-80	06-25-81	
Initial Criticality	08-08-76	07-05-80	11-05-81	
Commercial Operation	03-01-77	07-01-81	06-01-82	
Original License Exp.	07-02-16	09-17-20	09-15-21	
Renewal Application	01-06-04	01-15-13	01-15-13	
Renewal Approved	05-04-06	09-24-15	09-24-15	
Renewal License Exp.	07-02-36	09-17-40	09-15-41	
Notes:				

Operator	Tennessee Valley Authority		Wolf Creek Nuclear Operating Corp.
Owner(s)	Tennessee Valley Authority		Kansas City Power & Light Co. 47% Kansas Gas & Electric Co. 47% Kansas Electric Power Coop. 6% <i>STARS Member</i>
Nuclear Unit	Watts Bar 1	Watts Bar 2	Wolf Creek
Web Address	tva.gov	tva.gov	wcnoc.com
NRC Docket No.	50-390	50-391	50-482
Location	Spring City, TN	Spring City, TN	Burlington, KS
Type	PWR	PWR	PWR
Orig. Licensed MWt	3411	3411	3411
Up rated MWt	3459 (MUR)		3565 (S)
Design Capacity MWe	1218	1218	1170
Containment	Type 2ce	Type 2ce	Type 3b
Cooling	Towers (Natural)	Towers (Natural)	Coffey County Lake
NSSS Supplier	Westinghouse	Westinghouse	Westinghouse
Turbine Mfg.	Westinghouse	Siemens	GE
Engineer	Utility	Utility/Bechtel	Bechtel*/S&L**
Constructor	Utility	Utility/Bechtel	Daniel
Cask Model	HI-STORM FW	HI-STORM FW	
Cask Vendor	Holtec Int'l	Holtec Int'l	
License Type	General	General	
Announced	08-27-70	08-27-70	02-20-73
Application Docketed	05-18-71	05-18-71	05-17-74
Construction Permit	01-23-73	01-23-73	05-17-77
Operating License	11-09-95*	12-22-15	03-11-85
Initial Criticality	01-10-96	05-23-16	05-22-85
Commercial Operation	05-01-96*	06-05-16	09-03-85
Original License Exp.	02-07-36*	10-21-55	03-11-25
Renewal Application			10-04-06
Renewal Approved			11-20-08
Renewal License Exp.			03-11-45
Notes:	*low power license; full power license granted 02-07-96		* For standardized tests ** For site

International Nuclear Power Plants

Country/Plant	Type/Model	Net MWe	Commercial Operation	Status	Owner(s)
Argentina					
Atucha 1	PWHR/KWU	335	06-24-74	Operating	Nucleoeléctrica Argentina S.A.
Atucha 2	PWHR/KWU	692	06-27-14	Operating	Nucleoeléctrica Argentina S.A.
Embalse	PWHR/CANDU 6	600	01-20-84	Operating	Nucleoeléctrica Argentina S.A.
Armenia					
Armenia 2/Metzamor	PWR/VVER	375	05-03-80	Operating	Ministry of Energy and Natural Resources
Bangladesh					
Rooppur 1	PWR/VVER	1200	07-01-23*	Construction	Bangladesh Atomic Energy Commission
Belarus					
Belarusian/Ostrovets 1	PWR/VVER	1109	11-01-18*	Construction	Ministry of Energy
Belarusian/Ostrovets 2	PWR/VVER	1109	07-01-20*	Construction	Ministry of Energy
Belgium					
Doel 1	PWR/WE	433	02-15-75	Operating	Electrabel
Doel 2	PWR/WE	433	12-01-75	Operating	Electrabel
Doel 3	PWR/WE	1006	10-01-82	Operating	Electrabel
Doel 4	PWR/WE	1039	07-01-85	Operating	Electrabel
Tihange 1	PWR/Framatome	962	10-01-75	Operating	Electrabel
Tihange 2	PWR/WE	1008	06-01-83	Operating	Electrabel
Tihange 3	PWR/WE	1046	09-01-85	Operating	Electrabel
Brazil					
Angra 1	PWR/WE-2	626	01-01-85	Operating	Eletrobras Termonuclear S.A. / Eletronuclear
Angra 2	PWR/PRE KONVOI	1245	02-01-01	Operating	Eletrobras Termonuclear S.A. / Eletronuclear
Angra 3	PWR/PRE KONVOI	1245	N/A	Suspended	Eletrobras Termonuclear S.A. / Eletronuclear
Bulgaria					
Kozloduy 5	PWR/VVER	953	12-23-88	Operating	Bulgarian Energy Holding EAD
Kozloduy 6	PWR/VVER	953	12-30-93	Operating	Bulgarian Energy Holding EAD
Canada					
Bruce 1	PHWR/CANDU	772	09-01-77	Operating	Bruce Power
Bruce 2	PHWR/CANDU	734	09-01-77	Operating	Bruce Power
Bruce 3	PHWR/CANDU	730	02-01-78	Operating	Bruce Power
Bruce 4	PHWR/CANDU	730	01-18-79	Operating	Bruce Power
Bruce 5	PHWR/CANDU	817	03-01-85	Operating	Bruce Power
Bruce 6	PHWR/CANDU	817	09-14-84	Operating	Bruce Power
Bruce 7	PHWR/CANDU	817	04-10-86	Operating	Bruce Power
Bruce 8	PHWR/CANDU	817	05-22-87	Operating	Bruce Power
Darlington 1	PHWR/CANDU	878	11-14-92	Operating	Ontario Power Generation
Darlington 2	PHWR/CANDU	878	10-09-90	Operating	Ontario Power Generation
Darlington 3	PHWR/CANDU	878	02-14-93	Operating	Ontario Power Generation
Darlington 4	PHWR/CANDU	878	06-14-93	Operating	Ontario Power Generation
Pickering 1	PHWR/CANDU	515	06-29-71	Operating	Ontario Power Generation
Pickering 4	PHWR/CANDU	515	06-17-73	Operating	Ontario Power Generation
Pickering 5	PHWR/CANDU	516	05-10-83	Operating	Ontario Power Generation
Pickering 6	PHWR/CANDU	516	02-01-84	Operating	Ontario Power Generation
Pickering 7	PHWR/CANDU	516	01-01-85	Operating	Ontario Power Generation
Pickering 8	PHWR/CANDU	516	02-28-86	Operating	Ontario Power Generation
Point Lepreau 1	PHWR/CANDU-6	635	02-01-83	Operating	NB Power



Country/Plant	Type/Model	Net MWe	Commercial Operation	Status	Owner(s)
China, Peoples Republic of					
Changjiang 1	PWR/CNP-600	610	12-25-15	Operating	China National Nuclear Corporation
Changjiang 2	PWR/CNP-600	610	08-12-16	Operating	China National Nuclear Corporation
Fangchenggang 1	PWR/CPR-1000	1000	01-01-16	Operating	Guangxi Fangchenggang Nuclear Power Company, Ltd.
Fangchenggang 2	PWR/CPR-1000	1000	10-01-16	Operating	Guangxi Fangchenggang Nuclear Power Company, Ltd.
Fangchenggang 3	PWR/HPR-1000	1000	N/A	Construction	Guangxi Fangchenggang Nuclear Power Company, Ltd.
Fangchenggang 4	Hualong One	1000	N/A	Construction	Guangxi Fangchenggang Nuclear Power Company, Ltd.
Fangchenggang 5	Hualong One	1000	N/A	Construction	Guangxi Fangchenggang Nuclear Power Company, Ltd.
Fangchenggang 6	PWR/HPR-1000	1000	N/A	Construction	Guangxi Fangchenggang Nuclear Power Company, Ltd.
Fangjiashan 1	PWR/CNP-1000	1000	11-01-14	Operating	China National Nuclear Corporation
Fangjiashan 2	PWR/CNP-1000	1000	01-12-15	Operating	China National Nuclear Corporation
Fuqing 1	PWR/CPR-1000	1000	11-22-14	Operating	China National Nuclear Corporation
Fuqing 2	PWR/CPR-1000	1000	10-16-15	Operating	China National Nuclear Corporation
Fuqing 3	PWR/CPR-1000	1000	10-21-16	Operating	China National Nuclear Corporation
Fuqing 4	PWR/CPR-1000	1000	09-17-17	Operating	China National Nuclear Corporation
Fuqing 5	PWR/HPR-1000	1000	11-01-19*	Construction	China National Nuclear Corporation
Fuqing 6	PWR/HPR-1000	1000	06-01-20*	Construction	China National Nuclear Corporation
Guangdong 1 (Daya Bay)	PWR/M310	944	02-01-94	Operating	Guangdong Nuclear Power JV Company, Ltd.
Guangdong 2 (Daya Bay)	PWR/M310	944	05-07-94	Operating	Guangdong Nuclear Power JV Company, Ltd.
Haiyang 1	PWR/AP1000	1000	10-01-18*	Construction	China Power Investment Corporation
Haiyang 2	PWR/AP1000	1000	10-01-19*	Construction	China Power Investment Corporation
Hongyanhe 1	PWR/CPR-1000	1000	06-06-13	Operating	Liaoning Hongyanhe Nuclear Power Company, Ltd.
Hongyanhe 2	PWR/CPR-1000	1000	05-01-14	Operating	Liaoning Hongyanhe Nuclear Power Company, Ltd.
Hongyanhe 3	PWR/CPR-1000	1000	03-23-15	Operating	Liaoning Hongyanhe Nuclear Power Company, Ltd.
Hongyanhe 4	PWR/CPR-1000	1000	09-19-16	Operating	Liaoning Hongyanhe Nuclear Power Company, Ltd.
Hongyanhe 5	PWR/ACPR-1000	1000	07-01-19*	Construction	Liaoning Hongyanhe Nuclear Power Company, Ltd.
Hongyanhe 6	PWR/ACPR-1000	1000	06-01-20*	Construction	Liaoning Hongyanhe Nuclear Power Company, Ltd.
Lingao 1	PWR/M310	938	05-28-02	Operating	Lingao Nuclear Power Company, Ltd.
Lingao 2	PWR/M310	938	01-08-03	Operating	Lingao Nuclear Power Company, Ltd.
Lingao 3	PWR/CPR-1000	1007	09-15-10	Operating	Lingdong Nuclear Power Company, Ltd.
Lingao 4	PWR/CPR-1000	1007	08-07-11	Operating	Lingdong Nuclear Power Company, Ltd.
Lufeng 1	AP1000	1000	09-01-20*	Construction	State Nuclear Power Technology Corporation
Lufeng 2	AP1000	1000	07-01-21*	Construction	State Nuclear Power Technology Corporation
Ningde 1	PWR/CPR-1000	1000	04-15-13	Operating	China Guangdong Nuclear Power Group
Ningde 2	PWR/CPR-1000	1000	05-04-14	Operating	China Guangdong Nuclear Power Group
Ningde 3	PWR/CPR-1000	1000	03-21-15	Operating	China Guangdong Nuclear Power Group
Ningde 4	PWR/CPR-1000	1000	03-29-16	Operating	China Guangdong Nuclear Power Group
Qinshan 1	PWR/CNP-300	298	04-01-94	Operating	Qinshan Nuclear Power Company
Qinshan 2-1	PWR/CNP-600	610	04-18-02	Operating	Nuclear Power Plant Qinshan JV Company, Ltd.
Qinshan 2-2	PWR/CNP-600	610	05-03-04	Operating	Nuclear Power Plant Qinshan JV Company, Ltd.
Qinshan 2-3	PWR/CNP-600	610	10-21-10	Operating	Nuclear Power Plant Qinshan JV Company, Ltd.
Qinshan 2-4	PWR/CNP-600	610	12-30-11	Operating	Nuclear Power Plant Qinshan JV Company, Ltd.
Qinshan 3-1	PHWR/CANDU 6	650	12-31-02	Operating	Third Qinshan JV Company, Ltd.
Qinshan 3-2	PHWR/CANDU 6	650	07-24-03	Operating	Third Qinshan JV Company, Ltd.
Sanmen 1	PWR/AP1000	1000	10-01-18*	Construction	China National Nuclear Corporation
Sanmen 2	PWR/AP1000	1000	12-01-18*	Construction	China National Nuclear Corporation

International Nuclear Power Plants

Country/Plant	Type/Model	Net MWe	Commercial Operation	Status	Owner(s)
Shidaowan 1	GCR	200	05-01-17	Operating	State Nuclear Power Technology Corporation
Shidaowan 2	PWR/CAP-1400	1400	05-01-19*	Construction	State Nuclear Power Technology Corporation
Shidaowan 3	PWR/CAP-1400	1400	06-01-21*	Construction	State Nuclear Power Technology Corporation
Taishan 1	PWR/EPR-1700	1700	12-01-18*	Construction	Guangdong Taishan Nuclear Power JV Company, Ltd.
Taishan 2	PWR/EPR-1700	1700	12-01-19*	Construction	Guangdong Taishan Nuclear Power JV Company, Ltd.
Tianwan 1	PWR/VVER V-428	990	05-17-07	Operating	Jiangsu Nuclear Power Corporation
Tianwan 2	PWR/VVER V-428	990	08-16-07	Operating	Jiangsu Nuclear Power Corporation
Tianwan 3	PWR/VVER V-428	1000	01-01-19*	Construction	Jiangsu Nuclear Power Corporation
Tianwan 4	PWR/VVER V-428	1000	08-01-19*	Construction	Jiangsu Nuclear Power Corporation
Tianwan 5	ACPR-1000	1000	08-01-20*	Construction	Jiangsu Nuclear Power Corporation
Tianwan 6	ACPR-1000	1000	08-01-21*	Construction	Jiangsu Nuclear Power Corporation
Yangjiang 1	PWR/CPR-1000	1080	03-25-14	Operating	Guangdong Nuclear Power JV Company, Ltd.
Yangjiang 2	PWR/CPR-1000	1080	06-10-15	Operating	Guangdong Nuclear Power JV Company, Ltd.
Yangjiang 3	PWR/CPR-1000	1080	01-15-16	Operating	Guangdong Nuclear Power JV Company, Ltd.
Yangjiang 4	PWR/CPR-1000	1080	01-08-17	Operating	Guangdong Nuclear Power JV Company, Ltd.
Yangjiang 5	PWR/ACPR-1000	1000	10-01-18*	Construction	Guangdong Nuclear Power JV Company, Ltd.
Yangjiang 6	PWR/ACPR-1000	1000	07-01-19*	Construction	Guangdong Nuclear Power JV Company, Ltd.
Czech Republic					
Dukovany 1	PWR/VVER V-213	471	05-03-85	Operating	Czech Power Company, CEZ Group
Dukovany 2	PWR/VVER V-213	427	03-21-86	Operating	Czech Power Company, CEZ Group
Dukovany 3	PWR/VVER V-213	471	12-20-86	Operating	Czech Power Company, CEZ Group
Dukovany 4	PWR/VVER V-213	471	07-19-87	Operating	Czech Power Company, CEZ Group
Temelin 1	PWR/VVER V-320	963	06-10-02	Operating	Czech Power Company, CEZ Group
Temelin 2	PWR/VVER V-320	963	04-18-03	Operating	Czech Power Company, CEZ Group
Finland					
Loviisa 1	PWR/VVER V-213	496	05-09-77	Operating	Fortum Corporation
Loviisa 2	PWR/VVER V-213	496	01-05-81	Operating	Fortum Corporation
Olkiluoto 1	BWR/2500	880	10-10-79	Operating	Teollisuuden Voima Oy
Olkiluoto 2	BWR/2500	880	07-10-82	Operating	Teollisuuden Voima Oy
Olkiluoto 3	PWR/EPR	1600	12-01-19*	Construction	Teollisuuden Voima Oy
France					
Bellevalle 1	PWR/P4 REP 1300	1310	06-01-88	Operating	Électricité de France
Bellevalle 2	PWR/P4 REP 1300	1310	01-01-89	Operating	Électricité de France
Blayais 1	PWR/CP1	910	12-01-81	Operating	Électricité de France
Blayais 2	PWR/CP1	910	02-01-83	Operating	Électricité de France
Blayais 3	PWR/CP1	910	11-14-83	Operating	Électricité de France
Blayais 4	PWR/CP1	910	10-01-83	Operating	Électricité de France
Bugey 2	PWR/CP0	910	03-01-79	Operating	Électricité de France
Bugey 3	PWR/CP0	910	03-01-79	Operating	Électricité de France
Bugey 4	PWR/CP0	880	07-01-79	Operating	Électricité de France
Bugey 5	PWR/CP0	880	01-03-80	Operating	Électricité de France
Cattenom 1	PWR/P4 REP 1300	1300	04-01-87	Operating	Électricité de France
Cattenom 2	PWR/P4 REP 1300	1300	02-01-88	Operating	Électricité de France
Cattenom 3	PWR/P4 REP 1300	1300	02-01-91	Operating	Électricité de France
Cattenom 4	PWR/P4 REP 1300	1300	01-01-92	Operating	Électricité de France
Chinon B1	PWR/CP2	905	02-01-84	Operating	Électricité de France



Country/Plant	Type/Model	Net MWe	Commercial Operation	Status	Owner(s)
Chinon B2	PWR/CP2	905	08-01-84	Operating	Électricité de France
Chinon B3	PWR/CP2	905	03-04-87	Operating	Électricité de France
Chinon B4	PWR/CP2	905	04-01-88	Operating	Électricité de France
Chooz B1	PWR/N4 REP 1450	1500	05-15-00	Operating	Électricité de France
Chooz B2	PWR/N4 REP 1450	1500	09-29-00	Operating	Électricité de France
Civaux 1	PWR/N4 REP 1450	1495	01-29-02	Operating	Électricité de France
Civaux 2	PWR/N4 REP 1450	1495	04-23-02	Operating	Électricité de France
Cruas 1	PWR/CP2	915	04-02-84	Operating	Électricité de France
Cruas 2	PWR/CP2	915	04-01-85	Operating	Électricité de France
Cruas 3	PWR/CP2	915	09-10-84	Operating	Électricité de France
Cruas 4	PWR/CP2	915	02-11-85	Operating	Électricité de France
Dampierre 1	PWR/CP1	890	09-10-80	Operating	Électricité de France
Dampierre 2	PWR/CP1	890	02-16-81	Operating	Électricité de France
Dampierre 3	PWR/CP1	890	05-27-81	Operating	Électricité de France
Dampierre 4	PWR/CP1	890	11-20-81	Operating	Électricité de France
Fessenheim 1	PWR/CP0	880	01-01-78	Operating	Électricité de France
Fessenheim 2	PWR/CP0	880	04-01-78	Operating	Électricité de France
Flamanville 1	PWR/P4 REP1300	1330	12-01-86	Operating	Électricité de France
Flamanville 2	PWR/P4 REP 1300	1330	03-09-87	Operating	Électricité de France
Flamanville 3	PWR/EPR	1600	05-01-19*	Construction	Électricité de France
Golfech 1	PWR/P4 REP 1300	1310	02-01-91	Operating	Électricité de France
Golfech 2	PWR/P4 REP 1300	1310	03-04-94	Operating	Électricité de France
Gravelines 1	PWR/CP1	910	11-25-80	Operating	Électricité de France
Gravelines 2	PWR/CP1	910	12-01-80	Operating	Électricité de France
Gravelines 3	PWR/CP1	910	06-01-81	Operating	Électricité de France
Gravelines 4	PWR/CP1	910	10-01-81	Operating	Électricité de France
Gravelines 5	PWR/CP1	910	01-15-85	Operating	Électricité de France
Gravelines 6	PWR/CP1	910	10-25-85	Operating	Électricité de France
Nogent 1	PWR/P4 REP 1300	1310	02-24-88	Operating	Électricité de France
Nogent 2	PWR/P4 REP 1300	1310	05-01-89	Operating	Électricité de France
Paluel 1	PWR/P4 REP 1300	1330	12-01-85	Operating	Électricité de France
Paluel 2	PWR/P4 REP 1300	1330	12-01-85	Operating	Électricité de France
Paluel 3	PWR/P4 REP 1300	1330	02-01-86	Operating	Électricité de France
Paluel 4	PWR/P4 REP 1300	1330	06-01-86	Operating	Électricité de France
Penly 1	PWR/P4 REP 1300	1330	12-01-90	Operating	Électricité de France
Penly 2	PWR/P4 REP 1300	1330	11-01-92	Operating	Électricité de France
St. Alban 1	PWR/P4 REP 1300	1335	05-01-86	Operating	Électricité de France
St. Alban 2	PWR/P4 REP 1300	1335	03-01-87	Operating	Électricité de France
St. Laurent B1	PWR/CP2	915	08-01-83	Operating	Électricité de France
St. Laurent B2	PWR/CP2	915	08-01-83	Operating	Électricité de France
Tricastin 1	PWR/CP1	915	12-01-80	Operating	Électricité de France
Tricastin 2	PWR/CP1	915	12-01-80	Operating	Électricité de France
Tricastin 3	PWR/CP1	915	05-11-81	Operating	Électricité de France
Tricastin 4	PWR/CP1	915	11-01-81	Operating	Électricité de France

International Nuclear Power Plants

Country/Plant	Type/Model	Net MWe	Commercial Operation	Status	Owner(s)
Germany					
Brokdorf	PWR/PWR	1410	12-22-86	Operating	E.ON Kernkraft, Vattenfall Europe
Emsland	PWR/Konvoi	1329	06-20-88	Operating	RWE Power AG, E.ON Kernkraft
Grohnde	PWR/PWR	1360	02-01-85	Operating	E.ON Kernkraft, Stadtwerke Bielefeld
Gundremmingen B	BWR/72	1284	07-19-84	Operating	RWE Power AG, E.ON Kernkraft
Gundremmingen C	BWR/72	1288	01-18-85	Operating	RWE Power AG, E.ON Kernkraft
Isar 2	PWR/Konvoi	1410	04-09-88	Operating	E.ON Kernkraft, Stadtwerke Munchen
Neckarwestheim 2	PWR/Konvoi	1310	04-15-89	Operating	EnBW Kernkraft
Philippsburg 2	PWR/PWR	1402	04-18-85	Operating	EnBW Kraftwerke
Hungary					
Paks 1	PWR/VVER V-213	470	08-10-83	Operating	MVM Group
Paks 2	PWR/VVER V-213	473	11-14-84	Operating	MVM Group
Paks 3	PWR/VVER V-213	473	12-01-86	Operating	MVM Group
Paks 4	PWR/VVER V-213	473	11-01-87	Operating	MVM Group
India					
Gorakhpur 1	PHWR	640	01-01-20*	Construction	Nuclear Power Corporation of India, Ltd.
Gorakhpur 2	PHWR	640	01-01-21*	Construction	Nuclear Power Corporation of India, Ltd.
Kaiga 1	PHWR/HPT	202	11-16-00	Operating	Nuclear Power Corporation of India, Ltd.
Kaiga 2	PHWR/HPT	202	03-16-00	Operating	Nuclear Power Corporation of India, Ltd.
Kaiga 3	PHWR/HPT	202	05-06-07	Operating	Nuclear Power Corporation of India, Ltd.
Kaiga 4	PHWR/HPT	202	01-20-11	Operating	Nuclear Power Corporation of India, Ltd.
Kakrapar 1	PHWR/HPT	202	05-06-93	Operating	Nuclear Power Corporation of India, Ltd.
Kakrapar 2	PHWR/HPT	202	09-01-95	Operating	Nuclear Power Corporation of India, Ltd.
Kakrapar 3	PHWR/700	630	01-01-22*	Construction	Nuclear Power Corporation of India, Ltd.
Kakrapar 4	PHWR/700	630	08-30-22*	Construction	Nuclear Power Corporation of India, Ltd.
Kudankulam 1	PWR/VVER V-1000	917	12-31-14	Operating	Nuclear Power Corporation of India, Ltd.
Kudankulam 2	PWR/VVER V-1000	917	03-31-17	Operating	Nuclear Power Corporation of India, Ltd.
Kudankulam 3	PWR/VVER V-1000	917	03-01-23*	Construction	Nuclear Power Corporation of India, Ltd.
Kudankulam 4	PWR/VVER V-1000	917	03-01-24*	Construction	Nuclear Power Corporation of India, Ltd.
Madras 1	PHWR/HPT	205	01-27-84	Operating	Nuclear Power Corporation of India, Ltd.
Madras 2	PHWR/HPT	205	03-21-86	Operating	Nuclear Power Corporation of India, Ltd.
Narora 1	PHWR/HPT	202	01-01-91	Operating	Nuclear Power Corporation of India, Ltd.
Narora 2	PHWR/HPT	202	07-01-92	Operating	Nuclear Power Corporation of India, Ltd.
PFBR 1	LMFBR	500	12-01-18*	Construction	BHAVINI
Rajasthan 1	PHWR/HPT	90	12-16-73	Operating	Nuclear Power Corporation of India, Ltd.
Rajasthan 2	PHWR/HPT	187	04-01-81	Operating	Nuclear Power Corporation of India, Ltd.
Rajasthan 3	PHWR/HPT	202	06-01-00	Operating	Nuclear Power Corporation of India, Ltd.
Rajasthan 4	PHWR/HPT	202	12-23-00	Operating	Nuclear Power Corporation of India, Ltd.
Rajasthan 5	PHWR/HPT	202	02-04-10	Operating	Nuclear Power Corporation of India, Ltd.
Rajasthan 6	PHWR/HPT	202	03-31-10	Operating	Nuclear Power Corporation of India, Ltd.
Rajasthan 7	PHWR/HPT	630	01-01-22*	Construction	Nuclear Power Corporation of India, Ltd.
Rajasthan 8	PHWR/HPT	630	08-01-22*	Construction	Nuclear Power Corporation of India, Ltd.
Tarapur 1	BWR/Mark 2	150	10-28-69	Operating	Nuclear Power Corporation of India, Ltd.
Tarapur 2	BWR/Mark 2	150	10-28-69	Operating	Nuclear Power Corporation of India, Ltd.
Tarapur 3	PHWR/HPT	490	08-18-06	Operating	Nuclear Power Corporation of India, Ltd.



Country/Plant	Type/Model	Net MWe	Commercial Operation	Status	Owner(s)
Tarapur 4	PHWR/HPT	490	09-12-05	Operating	Nuclear Power Corporation of India, Ltd.
Iran					
Bushehr 1	PWR/VVER V-446	915	07-30-12	Operating	Atomic Energy Organization of Iran
Japan					
Fukushima-Daiichi 5	BWR/BWR-4	760	04-18-78	Suspended	Tokyo Electric Power Company, Inc.
Fukushima-Daiichi 6	BWR/BWR-5	1067	10-24-79	Suspended	Tokyo Electric Power Company, Inc.
Fukushima-Daini 1	BWR/BWR-5	1067	04-20-82	Suspended	Tokyo Electric Power Company, Inc.
Fukushima-Daini 2	BWR/BWR-5	1067	02-03-84	Suspended	Tokyo Electric Power Company, Inc.
Fukushima-Daini 3	BWR/BWR-5	1067	06-21-85	Suspended	Tokyo Electric Power Company, Inc.
Fukushima-Daini 4	BWR/BWR-5	1067	08-25-87	Suspended	Tokyo Electric Power Company, Inc.
Genkai 1	PWR/M 2-Loop	529	10-15-75	Suspended	Kyushu Electric Power Company, Inc.
Genkai 2	PWR/M 2-Loop	529	03-30-81	Suspended	Kyushu Electric Power Company, Inc.
Genkai 3	PWR/M 4-Loop	1127	03-18-94	Suspended	Kyushu Electric Power Company, Inc.
Genkai 4	PWR/M 4-Loop	1127	07-25-97	Suspended	Kyushu Electric Power Company, Inc.
Hamaoka 3	BWR/BWR-5	1056	08-28-87	Suspended	Chubu Electric Power Company, Inc.
Hamaoka 4	BWR/BWR-5	1092	09-03-93	Suspended	Chubu Electric Power Company, Inc.
Hamaoka 5	BWR/ABWR	1325	01-18-05	Suspended	Chubu Electric Power Company, Inc.
Higashi Dori 1	BWR/BWR-5	1067	12-08-05	Suspended	Tohoku Electric Power Company, Inc.
Ikata 2	PWR/M 2-Loop	538	03-19-82	Suspended	Shikoku Electric Power Company, Inc.
Ikata 3	PWR/M 3-Loop	846	12-15-94	Operating	Shikoku Electric Power Company, Inc.
Kashiwazaki Kariwa 1	BWR/BWR-5	1067	09-18-85	Suspended	Tokyo Electric Power Company, Inc.
Kashiwazaki Kariwa 2	BWR/BWR-5	1067	09-28-90	Suspended	Tokyo Electric Power Company, Inc.
Kashiwazaki Kariwa 3	BWR/BWR-5	1067	08-11-93	Suspended	Tokyo Electric Power Company, Inc.
Kashiwazaki Kariwa 4	BWR/BWR-5	1067	08-11-94	Suspended	Tokyo Electric Power Company, Inc.
Kashiwazaki Kariwa 5	BWR/BWR-5	1067	04-10-90	Suspended	Tokyo Electric Power Company, Inc.
Kashiwazaki Kariwa 6	BWR/ABWR	1315	11-07-96	Suspended	Tokyo Electric Power Company, Inc.
Kashiwazaki Kariwa 7	BWR/ABWR	1315	07-02-97	Suspended	Tokyo Electric Power Company, Inc.
Mihama 1	PWR/W 2-Loop	320	11-28-70	Suspended	Kansai Electric Power Company, Inc.
Mihama 2	PWR/M 2-Loop	470	07-25-72	Suspended	Kansai Electric Power Company, Inc.
Mihama 3	PWR/M 3-Loop	780	12-01-76	Suspended	Kansai Electric Power Company, Inc.
Ohi 1	PWR/W 4-Loop	1120	03-27-79	Suspended	Kansai Electric Power Company, Inc.
Ohi 2	PWR/W 4-Loop	1120	12-05-79	Suspended	Kansai Electric Power Company, Inc.
Ohi 3	PWR/M 4-Loop	1127	12-18-91	Operating	Kansai Electric Power Company, Inc.
Ohi 4	PWR/M 4-Loop	1127	02-02-93	Operating	Kansai Electric Power Company, Inc.
OHMA	BWR/ABWR	1325	N/A	Suspended	Electric Power Development Company, Ltd.
Onagawa 1	BWR/BWR-4	498	07-01-84	Suspended	Tohoku Electric Power Company, Inc.
Onagawa 2	BWR/BWR-5	796	07-28-95	Suspended	Tohoku Electric Power Company, Inc.
Onagawa 3	BWR/BWR-5	796	01-30-02	Suspended	Tohoku Electric Power Company, Inc.
Sendai 1	PWR/M 3-Loop	846	07-04-84	Operating	Kyushu Electric Power Company, Inc.
Sendai 2	PWR/M 3-Loop	846	11-28-85	Operating	Kyushu Electric Power Company, Inc.
Shika 1	BWR/BWR-5	505	07-30-93	Suspended	Hokuriku Electric Power Company
Shika 2	BWR/ABWR	1108	03-15-06	Suspended	Hokuriku Electric Power Company
Shimane 1	BWR/BWR-3	439	03-29-74	Suspended	Chugoku Electric Power Company, Inc.
Shimane 2	BWR/BWR-5	789	02-10-89	Suspended	Chugoku Electric Power Company, Inc.

International Nuclear Power Plants

Country/Plant	Type/Model	Net MWe	Commercial Operation	Status	Owner(s)
Shimane 3	BWR/ABWR	1325	N/A	Suspended	Chugoku Electric Power Company, Inc.
Takahama 1	PWR/M 3-Loop	780	11-14-74	Suspended	Kansai Electric Power Company, Inc.
Takahama 2	PWR/M 3-Loop	780	11-14-75	Suspended	Kansai Electric Power Company, Inc.
Takahama 3	PWR/M 3-Loop	830	01-17-85	Operating	Kansai Electric Power Company, Inc.
Takahama 4	PWR/M 3-Loop	830	06-05-85	Operating	Kansai Electric Power Company, Inc.
Tokai 2	BWR/BWR-5	1060	11-28-78	Suspended	Japan Atomic Power Company
Tomari 1	PWR/M 2-Loop	550	06-22-89	Suspended	Hokkaido Electric Power Company, Inc.
Tomari 2	PWR/M 2-Loop	550	04-12-91	Suspended	Hokkaido Electric Power Company, Inc.
Tomari 3	PWR/M 3-Loop	866	12-22-09	Suspended	Hokkaido Electric Power Company, Inc.
Tsuruga 1	BWR/BWR-2	340	03-14-70	Suspended	Japan Atomic Power Company
Tsuruga 2	PWR/M 4-Loop	1108	02-17-87	Suspended	Japan Atomic Power Company
Korea, Republic of					
Hanbit 1	PWR/WH F	953	08-25-86	Operating	Korea Hydro & Nuclear Power Company
Hanbit 2	PWR/WH F	947	06-10-87	Operating	Korea Hydro & Nuclear Power Company
Hanbit 3	PWR/OPR-1000	997	03-31-95	Operating	Korea Hydro & Nuclear Power Company
Hanbit 4	PWR/OPR-1000	994	01-01-96	Operating	Korea Hydro & Nuclear Power Company
Hanbit 5	PWR/OPR-1000	988	05-21-02	Operating	Korea Hydro & Nuclear Power Company
Hanbit 6	PWR/OPR-1000	996	12-24-02	Operating	Korea Hydro & Nuclear Power Company
Hanul 1	PWR/CPI	945	09-10-88	Operating	Korea Hydro & Nuclear Power Company
Hanul 2	PWR/CPI	942	09-30-89	Operating	Korea Hydro & Nuclear Power Company
Hanul 3	PWR/OPR-1000	994	08-11-98	Operating	Korea Hydro & Nuclear Power Company
Hanul 4	PWR/OPR-1000	998	12-31-99	Operating	Korea Hydro & Nuclear Power Company
Hanul 5	PWR/OPR-1000	997	07-29-04	Operating	Korea Hydro & Nuclear Power Company
Hanul 6	PWR/OPR-1000	997	04-22-05	Operating	Korea Hydro & Nuclear Power Company
Kori 2	PWR/WH F	637	06-25-83	Operating	Korea Hydro & Nuclear Power Company
Kori 3	PWR/WH F	1011	09-30-85	Operating	Korea Hydro & Nuclear Power Company
Kori 4	PWR/WH F	1009	04-29-86	Operating	Korea Hydro & Nuclear Power Company
Shin-Hanul 1	PWR/APR-1400	1340	04-01-18	Construction	Korea Hydro & Nuclear Power Company
Shin-Hanul 2	PWR/APR-1400	1340	02-01-19*	Construction	Korea Hydro & Nuclear Power Company
Shin-Hanul 3	PWR/APR-1400	1340	12-01-22*	Construction	Korea Hydro & Nuclear Power Company
Shin-Hanul 4	PWR/APR-1400	1340	12-01-23*	Construction	Korea Hydro & Nuclear Power Company
Shin-Kori 1	PWR/OPR-1000	985	02-28-11	Operating	Korea Hydro & Nuclear Power Company
Shin-Kori 2	PWR/OPR-1000	960	07-20-12	Operating	Korea Hydro & Nuclear Power Company
Shin-Kori 3	PWR/APR-1400	1340	01-15-16	Operating	Korea Hydro & Nuclear Power Company
Shin-Kori 4	PWR/APR-1400	1340	09-01-18*	Construction	Korea Hydro & Nuclear Power Company
Shin-Kori 5	PWR/APR-1400	1340	10-01-21*	Construction	Korea Hydro & Nuclear Power Company
Shin-Kori 6	PWR/APR-1400	1340	10-01-22*	Construction	Korea Hydro & Nuclear Power Company
Shin-Wolsong 1	PWR/OPR-1000	960	07-31-12	Operating	Korea Hydro & Nuclear Power Company
Shin-Wolsong 2	PWR/OPR-1000	960	02-26-15	Operating	Korea Hydro & Nuclear Power Company
Wolsong 1	PHWR/CANDU 6	660	04-22-83	Operating	Korea Hydro & Nuclear Power Company
Wolsong 2	PHWR/CANDU 6	710	07-01-97	Operating	Korea Hydro & Nuclear Power Company
Wolsong 3	PHWR/CANDU 6	707	07-01-98	Operating	Korea Hydro & Nuclear Power Company
Wolsong 4	PHWR/CANDU 6	708	10-01-99	Operating	Korea Hydro & Nuclear Power Company
Mexico					



Country/Plant	Type/Model	Net MWe	Commercial Operation	Status	Owner(s)
Laguna Verde 1	BWR/BWR-5	650	07-29-90	Operating	Comisión Federal de Electricidad
Laguna Verde 2	BWR/BWR-5	650	04-10-95	Operating	Comisión Federal de Electricidad
Netherlands					
Borssele	PWR/LWR PWR	482	10-26-73	Operating	N.V. EPZ
Pakistan					
Chasnupp 1	PWR/CNP-300	300	09-15-00	Operating	Pakistan Atomic Energy Commission
Chasnupp 2	PWR/PWR	300	05-18-11	Operating	Pakistan Atomic Energy Commission
Chasnupp 3	PWR/CNP-300	315	10-15-16	Operating	Pakistan Atomic Energy Commission
Chasnupp 4	PWR/CNP-300	315	07-01-17	Operating	Pakistan Atomic Energy Commission
Kanupp	PHWR/CANDU	125	12-07-72	Operating	Pakistan Atomic Energy Commission
Romania					
Cernavoda 1	PHWR/CANDU 6	650	12-02-96	Operating	Societatea Nationala Nuclearelectrica
Cernavoda 2	PHWR/CANDU 6	650	10-31-07	Operating	Societatea Nationala Nuclearelectrica
Russia					
Akademik Lomonosov 1	PWR/KLT-40S	32	12-31-14	Operating	Rosenergoatom
Akademik Lomonosov 2	PWR/KLT-40S	32	12-01-14	Operating	Rosenergoatom
Balakovo 1	PWR/VVER V-320	950	05-23-86	Operating	Rosenergoatom
Balakovo 2	PWR/VVER V-320	950	01-18-88	Operating	Rosenergoatom
Balakovo 3	PWR/VVER V-320	950	04-08-89	Operating	Rosenergoatom
Balakovo 4	PWR/VVER V-320	950	12-22-93	Operating	Rosenergoatom
Baltic 1 (Kaliningrad)	PWR/VVER V-491	1109	N/A	Construction	Rosenergoatom
Beloyarsk 3	FBR/BN-600	560	11-01-80	Operating	Rosenergoatom
Beloyarsk 4	FBR/BN-800	804	12-10-15	Operating	Rosenergoatom
Bilibino 1	LWGR/EGP-6	11	04-01-74	Operating	Rosenergoatom
Bilibino 2	LWGR/EGP-6	11	02-01-75	Operating	Rosenergoatom
Bilibino 3	LWGR/EGP-6	11	02-01-76	Operating	Rosenergoatom
Bilibino 4	LWGR/EGP-6	11	01-01-77	Operating	Rosenergoatom
Kalinin 1	PWR/VVER V-338	950	06-12-85	Operating	Rosenergoatom
Kalinin 2	PWR/VVER V-338	950	12-03-86	Operating	Rosenergoatom
Kalinin 3	PWR/VVER V-320	950	11-08-05	Operating	Rosenergoatom
Kalinin 4	PWR/VVER V-320	950	09-25-12	Operating	Rosenergoatom
Kola 1	PWR/VVER V-230	411	12-28-73	Operating	Rosenergoatom
Kola 2	PWR/VVER V-230	411	02-21-75	Operating	Rosenergoatom
Kola 3	PWR/VVER V-230	411	12-03-82	Operating	Rosenergoatom
Kola 4	PWR/VVER V-230	411	12-06-84	Operating	Rosenergoatom
Kursk 1	LWGR/RBMK-1000	925	10-12-77	Operating	Rosenergoatom
Kursk 2	LWGR/RBMK-1000	925	08-17-89	Operating	Rosenergoatom
Kursk 3	LWGR/RBMK-1000	925	03-30-84	Operating	Rosenergoatom
Kursk 4	LWGR/RBMK-1000	925	02-05-86	Operating	Rosenergoatom
Kursk 5	LWGR/RBMK-1000	915	N/A	Suspended	Rosenergoatom
Leningrad 1	LWGR/RBMK-1000	925	11-01-74	Operating	Rosenergoatom
Leningrad 2	LWGR/RBMK-1000	925	02-11-76	Operating	Rosenergoatom
Leningrad 3	LWGR/RBMK-1000	925	06-29-80	Operating	Rosenergoatom

International Nuclear Power Plants



Country/Plant	Type/Model	Net MWe	Commercial Operation	Status	Owner(s)
Leningrad 4	LWGR/RBMK-1000	925	08-29-81	Operating	Rosenergoatom
Leningrad 2-1	PWR/VVER V-491	1085	07-01-18*	Construction	Rosenergoatom
Leningrad 2-2	PWR/VVER V-491	1085	07-01-20*	Construction	Rosenergoatom
Novovoronezh 3	PWR/VVER V-179	385	06-29-72	Operating	Rosenergoatom
Novovoronezh 4	PWR/VVER V-179	385	03-24-73	Operating	Rosenergoatom
Novovoronezh 5	PWR/VVER V-187	950	02-20-81	Operating	Rosenergoatom
Novovoronezh 6	PWR/VVER-1200	1114	08-05-16	Operating	Rosenergoatom
Novovoronezh 7	PWR/VVER-1200	1114	N/A	Construction	Rosenergoatom
Rostov 1	PWR/VVER V-320I	950	12-25-01	Operating	Rosenergoatom
Rostov 2	PWR/VVER V-320I	950	12-10-10	Operating	Rosenergoatom
Rostov 3	PWR/VVER V-320	1011	09-17-15	Operating	Rosenergoatom
Rostov 4	PWR/VVER V-320	1011	07-01-18*	Construction	Rosenergoatom
Smolensk 1	LWGR/RBMK-1000	925	09-30-83	Operating	Rosenergoatom
Smolensk 2	LWGR/RBMK-1000	925	07-02-85	Operating	Rosenergoatom
Smolensk 3	LWGR/RBMK-1000	925	10-12-90	Operating	Rosenergoatom
Slovakia					
Bohunice 3	PWR/VVER V-213	472	02-14-85	Operating	Slovenské elektrárne, a.s.
Bohunice 4	PWR/VVER V-213	472	12-18-85	Operating	Slovenské elektrárne, a.s.
Mochovce 1	PWR/VVER V-213	436	10-29-98	Operating	Slovenské elektrárne, a.s.
Mochovce 2	PWR/VVER V-213	436	04-11-00	Operating	Slovenské elektrárne, a.s.
Mochovce 3	PWR/VVER V-213	391	11-01-18*	Construction	Slovenské elektrárne, a.s.
Mochovce 4	PWR/VVER V-213	391	12-01-19*	Construction	Slovenské elektrárne, a.s.
Slovenia					
Krsko	PWR/W 212	688	01-01-83	Operating	Gen Energija, Hrvatska Elektropivreda
South Africa					
Koeberg 1	PWR/CP1	930	07-21-84	Operating	Eskom
Koeberg 2	PWR/CP1	900	11-09-85	Operating	Eskom
Spain					
Almaraz 1	PWR/WE 3-Loop	1004	09-01-83	Operating	Iberdrola, Endesa, Union Fenosa
Almaraz 1	PWR/WE 3-Loop	1006	07-01-84	Operating	Iberdrola, Endesa, Union Fenosa
Asco 1	PWR/WE 3-Loop	995	12-10-84	Operating	Endesa
Asco 2	PWR/WE 3-Loop	997	03-31-86	Operating	Endesa
Cofrentes	BWR/BWR-6	1064	03-11-85	Operating	Iberdrola
Trillo 1	PWR/ PWR 3-Loop	1003	08-06-88	Operating	Iberdrola, Nuclenor, et al
Vandellós 2	PWR/WE 3-Loop	1045	03-08-88	Operating	Iberdrola, Endesa
Sweden					
Forsmark 1	BWR/BWR-75	984	12-10-80	Operating	Forsmark Kraftgrupp AB
Forsmark 2	BWR/BWR-75	996	07-07-81	Operating	Forsmark Kraftgrupp AB
Forsmark 3	BWR/BWR-3000	1170	08-18-85	Operating	Forsmark Kraftgrupp AB
Oskarshamn 3	BWR/BWR-75	1400	08-15-85	Operating	Okg Aktiebolag
Ringhals 1	BWR/BWR	865	01-01-76	Operating	Ringhals AB
Ringhals 2	PWR/WE 3-Loop	865	05-01-75	Operating	Ringhals AB
Ringhals 3	PWR/WE 3-Loop	1064	09-09-81	Operating	Ringhals AB
Ringhals 4	PWR/WE 3-Loop	940	11-21-83	Operating	Ringhals AB
Switzerland					
Beznau 1	PWR/WH 2-Loop	365	09-01-69	Operating	Kernkraftwerk Beznau
Beznau 2	PWR/WH 2-Loop	365	12-01-71	Operating	Kernkraftwerk Beznau
Goesgen	PWR/3-Loop	970	11-01-79	Operating	Kernkraftwerk Göesgen - Däniken AG
Leibstadt	BWR/BWR-6	1190	12-15-84	Operating	Kernkraftwerk Leibstadt AG



Country/Plant	Type/Model	Net MWe	Commercial Operation	Status	Owner(s)
Muehleberg	BWR/BWR-4	373	11-06-72	Operating	BKW Energie AG
Taiwan (Republic of China)					
Chin Shan 1	BWR/BWR-4	604	12-10-78	Operating	Taiwan Power Company
Chin Shan 2	BWR/BWR-4	604	07-15-79	Operating	Taiwan Power Company
Kuosheng 1	BWR/BWR-6	985	12-18-81	Operating	Taiwan Power Company
Kuosheng 2	BWR/BWR-6	985	03-16-83	Operating	Taiwan Power Company
Lungmen 1	BWR/ABWR	1300	N/A	Suspended	Taiwan Power Company
Lungmen 2	BWR/ABWR	1300	N/A	Suspended	Taiwan Power Company
Maanshan 1	PWR/WE 312	918	07-27-84	Operating	Taiwan Power Company
Maanshan 2	PWR/WE 312	922	05-18-85	Operating	Taiwan Power Company
Ukraine					
Khmelnitski 1	PWR/VVER V-320	950	08-13-88	Operating	Energoatom
Khmelnitski 2	PWR/VVER V-320	950	12-15-05	Operating	Energoatom
Khmelnitski 3	PWR/VVER V-392B	950	N/A	Construction	Energoatom
Khmelnitski 4	PWR/VVER V-392B	950	N/A	Construction	Energoatom
Rovno 1	PWR/VVER V-213	381	09-21-81	Operating	Energoatom
Rovno 2	PWR/VVER V-213	376	07-30-82	Operating	Energoatom
Rovno 3	PWR/VVER V-320	950	05-16-87	Operating	Energoatom
Rovno 4	PWR/VVER V-320	950	04-06-06	Operating	Energoatom
South Ukraine 1	PWR/VVER V-320	950	10-18-83	Operating	Energoatom
South Ukraine 2	PWR/VVER V-338	950	04-06-85	Operating	Energoatom
South Ukraine 3	PWR/VVER V-320	950	12-29-89	Operating	Energoatom
Zaporozhe 1	PWR/VVER V-320	950	12-25-85	Operating	Energoatom
Zaporozhe 2	PWR/VVER V-320	950	02-15-86	Operating	Energoatom
Zaporozhe 3	PWR/VVER V-320	950	03-05-87	Operating	Energoatom
Zaporozhe 4	PWR/VVER V-320	950	04-14-88	Operating	Energoatom
Zaporozhe 5	PWR/VVER V-320	950	10-27-89	Operating	Energoatom
Zaporozhe 6	PWR/VVER V-320	950	09-16-96	Operating	Energoatom
United Arab Emirates					
Barakah 1	PWR/APR-1400	1345	04-01-19*	Construction	Emirates Nuclear Energy Corporation
Barakah 2	PWR/APR-1400	1345	12-01-19*	Construction	Emirates Nuclear Energy Corporation
Barakah 3	PWR/APR-1400	1345	05-01-20*	Construction	Emirates Nuclear Energy Corporation
Barakah 4	PWR/APR-1400	1345	05-01-21*	Construction	Emirates Nuclear Energy Corporation
United Kingdom					
Dungeness B1	GCR/AGR	520	04-01-85	Operating	EDF Energy
Dungeness B2	GCR/AGR	520	04-01-89	Operating	EDF Energy
Hartlepool A1	GCR/AGR	595	04-01-89	Operating	EDF Energy
Hartlepool A2	GCR/AGR	585	04-01-89	Operating	EDF Energy
Heysham A1	GCR/AGR	580	04-01-89	Operating	EDF Energy
Heysham A2	GCR/AGR	575	04-01-89	Operating	EDF Energy
Heysham B1	GCR/AGR	620	04-01-89	Operating	EDF Energy
Heysham B2	GCR/AGR	620	04-01-89	Operating	EDF Energy
Hinkley Point B1	GCR/AGR	475	10-02-78	Operating	EDF Energy
Hinkley Point B2	GCR/AGR	470	09-27-76	Operating	EDF Energy
Hunterston B1	GCR/AGR	475	02-06-76	Operating	EDF Energy
Hunterston B2	GCR/AGR	485	03-01-77	Operating	EDF Energy
Sizewell B	PWR/SNUPPS	1188	09-22-95	Operating	EDF Energy
Torness 1	GCR/AGR	600	05-25-88	Operating	EDF Energy
Torness 2	GCR/AGR	605	02-03-89	Operating	EDF Energy

Curtiss-Wright Nuclear

For over 55 years, Curtiss-Wright engineers and specialists have provided products, services, and software-related solutions to the global power industry.

We are leaders in:

- *engineering services*
- *environmental qualification, seismic testing, commercial grade dedication (CGD)*
- *equipment reliability and performance improvement programs*
- *equipment inspection, testing, repair, upgrade, modifications*
- *fabrication and system integration*
- *fluid sealing technologies*
- *HVAC systems*
- *inventory database services*
- *manufactured components*
- *non-destructive examination (NDE) services*
- *obsolescence support services*
- *outage support services*
- *plant process computer systems*
- *post-Fukushima solutions*
- *regulatory information databases and services*
- *safety and risk services*
- *system controls, instrumentation and monitoring*
- *valves and valve actuators*



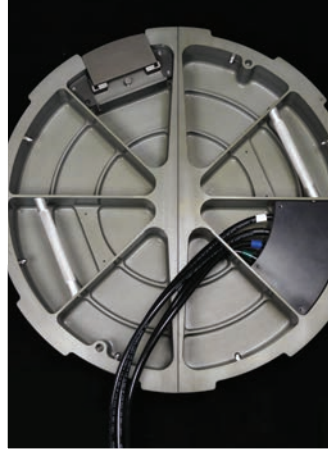
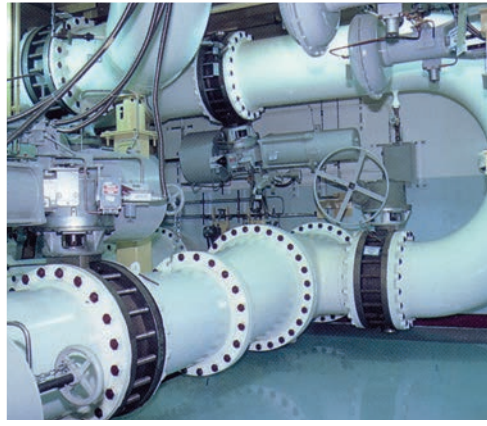
**CURTISS -
WRIGHT**

If you would like additional copies of **Commercial Nuclear Power Plants**, you can email nucdirectory@curtisswright.com or call 301.732.6448. This document can also be viewed and printed online at <http://www.cwnuclear.com/download-library>.

The information in this document is accurate to the best of Curtiss-Wright's knowledge as of its date of publication. This document is for informational purposes only and is not intended to stipulate binding commitments of Curtiss-Wright or any other Party.

Notes

A series of horizontal lines for writing notes, with a vertical red dashed line on the left side.



**Curtiss-Wright Nuclear
Headquarters**
2950 E. Birch Street
Brea, CA 92821
714.982.1898

Anatec
2950 E. Birch Street
Brea, CA 92821
714.528.2301

AP Services
203 Armstrong Drive
Freeport, PA 16229
724.295.6200

Curtiss-Wright Nuclear Canada
165 Pony Drive
Newmarket, Ontario L3Y 7B5
905.954.0841

Enertech
2950 E. Birch Street
Brea, CA 92821
714.528.2301

LMT
980 2nd Avenue SE, Suite B
Hutchinson, MN 55350
320.316.3531

Netco
44 Shelter Rock Road
Danbury, CT 06810
203.448.3310

Nova
18001 Sheldon Road
Middleburg Heights, OH 44130
216.267.3200

QualTech NP
4600 East Tech Drive
Cincinnati, OH 45245
513.528.7900

125 West Park Loop NW
Huntsville, AL 35806
256.722.8500

Scientech
1350/1360 Whitewater Drive
Idaho Falls, ID 83402
208.497.3333

700 Corporate Row
Cromwell, CT 06416
860.975.2634

44 Shelter Rock Road
Danbury, CT 06810
203.448.3310

29399 U.S. Hwy 19 North
Clearwater, FL 33761
727.669.3000

38 Bombay Lane
Berwick, PA 18603
570.752.8120

cwnuclear.com



Download the app!

Get the free mobile version of the Commercial Nuclear Power Plant Directory by searching for Curtiss-Wright at the App stores.





Commercial Nuclear Power Plant Directory