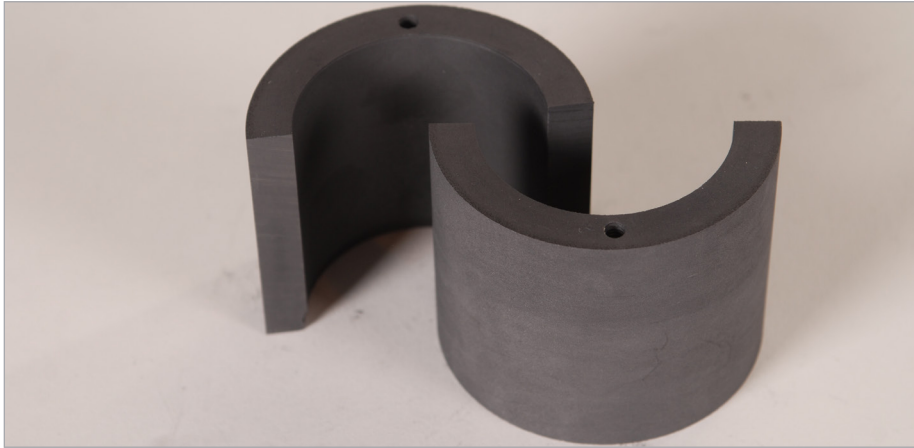


# Graphite Bushings Mechanical Packing

AP STYLE 5005/5010

**CURTISS -  
WRIGHT**



## AP Style 5005/5010

AP Services, a product and service brand of Curtiss-Wright, manufactures pump and valve packing products that have among the lowest leak rates and friction in the industry. After extensive testing, AP Services has found that excessive packing rings increase friction and cause poor gland load transfer, resulting in less than optimum performance. We have cured this problem by utilizing graphite bushings to take up space previously occupied by excessive packing rings. Style 5005 and 5010 graphite bushings provide stem support on valves that are mounted horizontally or on an angle, make up for poor valve clearances, and aid in stem alignment resulting in better valve performance, seat loading, and longer packing life.

AP Services graphite bushings are manufactured from fine-grained, high-density, high-purity, isotropic graphite with high compressive strength and low coefficient of thermal expansion. The standard length bushings are supplied vertically split and precision-machined to specific clearances to fit into each stuffing box. To aid in removal, each bushing is drilled and tapped on one end.

Style 5005 & 5010 graphite bushings are extremely durable and designed to be a permanent fixture once installed. The difference between the two styles is compressive strength. Style 5010 high-density bushings are superior performing and designed to handle the harshest applications. Style 5005 & 5010 graphite bushings are manufactured to exact tolerances and available in standard or specified lengths.

AP Services recommends that if the stuffing box and/or packing gland are angled, the graphite bushings should be machined to the matching angle or a cushioning material be placed between the two surfaces.

Please contact AP Services with your specific tolerance and clearance requirements, and any other questions.

## Typical Properties

<b>Maximum Temperature</b>
5,000 °F
<b>Density</b>
Style 5005 - 110 lbs./cu. ft. Style 5010 - 112 lbs./cu. ft.
<b>Standard Lengths</b>
1", 2", 4", and 6" (other lengths available upon request)

## CONTACT INFORMATION:

18001 Sheldon Road, Middleburg Hts., OH 44130  
+1.216.267.3200 | cwuclear.com