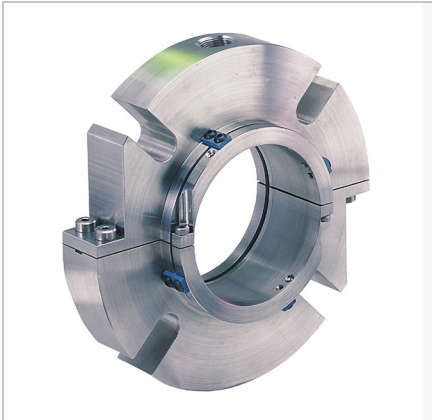


# Flexaseal Style 85

*Mechanical Seal Solutions for Municipalities*

**CURTISS -  
WRIGHT**

Power and Process Products and Services



## About

Curtiss-Wright is a leading supplier of safety-related, NQA-1, and commercial grade fluid sealing solutions for the U.S. Department of Energy, commercial nuclear and fossil power plants, the Department of Defense, and the industrial market. We are recognized as an industry leader in providing fluid sealing technologies and leak management solutions with unmatched customer service and quality.

## Mechanical Seal Solutions for Municipalities

Curtiss-Wright has partnered with Flexaseal to provide a highly engineered mechanical seal solution to the nuclear market. The Flexaseal Style 85, split seal: increasing reliability, decreasing downtime and operating costs, and increasing worker safety.

The Style 85 is engineered as a split, internal, hydraulically balanced, stationary seal mounted on the side of a stuffing box, which allows the centrifugal force to keep solids away from the seal faces while maintaining the ability to handle higher speeds, internal pressures, and misalignment.

With one of the easiest split seal installations, the Style 85 is also designed to meet almost any sealing challenge. The ease of installation makes this seal perfect for hard-to-access equipment. Ideally suited for pumps that have long maintenance downtimes for mechanical seal replacement. Proven to reduce the downtime and get the pump back online much quicker than traditional full cartridge seals.

## Key Benefits

- All components are encased and protected, keeping them from being dislodged, lost, or damaged
- Industry exclusive, streamlined installation process greatly decreases down time and worker safety
- All Style 85 mechanical seals are assembled and pressure tested at the facility, ensuring a high success rate on start up
- Installation and removal tools provided
- No charge failure analysis service, including suggestions to improve seal run time
- Flex-A-Seal and OEM seals can be evaluated at no charge and repaired, pressure tested, and certified to “like new” with a one-year warranty

## Operating Parameters

- Seal size: 1 3/4" (45mm) and up
- Temperature: 350°F (175°C)
- Speed: 875 RPM – 3600 RPM
- Pressure: 100 PSI (7 bar) – 250 PSI (17 bar)

## CONTACT INFORMATION:

18001 Sheldon Road, Middleburg Heights, OH 44130  
fre\_sales@curtisswright.com | +1.216.267.3200

**Power & Process**  
CWNUCLEAR.COM